

**EVERYONE ELIGIBLE!**  
Individuals, organizations or businesses may use this space to advertise promotions. For details, phone:  
**375-2600 or 1-800-672-3418**

**Area students named to 'Who's Who' list**  
Speaking of People, Page 2

**MAXIMUM EXPOSURE!**  
This premium space on the front page is available for your advertising message. For details, phone:  
**375-2600 or 1-800-672-3418**

# THE WAYNE HERALD

WAYNE, NE 68787 MONDAY, DEC. 9, 1991 — 116TH YEAR — NO. 19 THIS ISSUE — 1 SECTION, 12 PAGES LOCAL DELIVERY 25¢ — NEWSSTAND 45¢



**Signs of Christmas**  
DEAN BILSTEIN OF KTCH decorates the Wayne radio station's tree at the Fantasy Forest display. The show ended Saturday.

## City planning takes first step

By Mark Crist  
Managing Editor

Approximately 80 residents attended four quadrant meetings Thursday night to voice their ideas over what direction the community should go in the next five to 10 years.

Among the key issues slated to be discussed at each of the "neighborhood" meetings were: housing; urban design; land use and land use regulations; commercial districts; transportation; parks and recreation; public facilities; and community and economic development. One item which received some discussion was the possibility of constructing a multi-purpose community center.

THE MEETINGS headed by officials from Hanna-Keelan Associates of Lincoln, resulted in a great deal of information being passed on to the firm updating Wayne's comprehensive plan.

"I thought we had a great turnout," said Wayne Planning Commission Chairperson George Phelps, who attended the meeting in the northwest conference.

"We had a good cross-section of residents attend these meetings. The town is being saturated and everybody had a chance to voice their opinion. I think that's a pretty good use of the democratic process."

Interestingly enough, comments made at residential meetings seem to stem around the same theme: housing.

One example was in the southeast quadrant meeting, housing rehabilitation and cleanup of neighborhoods seemed to dominate discussions. Sidewalks, making homes affordable for low to moderate income buyers also received a great deal of discussion and the possibility of establishing a renter's association was discussed, since

**'The town is being saturated and everybody had a chance to voice their opinion. I think that's a pretty good use of the democratic process.'**

George Phelps

many of the homes in the southeast quadrant are owned as rental properties.

IN THE NORTHWEST quadrant meeting the key issues were traffic flow in new housing developments, water runoff, the widening of Highway 35 and B-2 zoning uses.

One theme which was discussed revolved around the possibility of constructing a multi-purpose community center. While at least half the residents seem to favor the idea of a multi-purpose center, affordability seemed to be a concern.

In addition to holding the quadrant meetings, Hanna-Keelan officials also visited with about 15 members of the Wayne Educators Association, 30 people from the governmental entities, 10 people from the Wayne Area Chamber of Commerce and Wayne Industries, approximately 15 Wayne State College students and approximately 10 people from the ag community and the Wayne County Fair Board. Hanna-Keelan officials are also expected to attend the Kiwanis meeting Monday and they will visit with students from Wayne High School.

"We're going to be covering a lot of ideas and attitudes," Phelps said. "That's how you get things accomplished."

### At a Glance

#### Vocal concert

WAYNE - The Wayne Middle School will hold its grade 5-8 vocal concert Dec. 12 in the high school lecture hall at 7:30 p.m.

The concert will feature music by the fifth grade, the sixth grade, the 7-8 grade choir, the music makers and the 7-8 grade swing choir.

#### Music concert

WAYNE - The high school band and choir will be in concert Monday, Dec. 16 at 7:30 p.m. in the high school lecture hall. The concert had originally been planned Dec. 13.

#### Carolers sing

WAYNE - Again this year the first through fourth grade classes will be singing Christmas carols in the downtown areas. Starting times and places include:

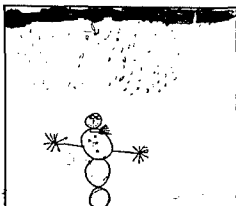
- Wednesday, Dec. 11, 10 a.m. at Dearborn Mall and Quality Foods, featuring Carol students in grades K-4.
- Thursday, Dec. 12, 2:30 p.m., Wayne second graders at Pac 'N' Save.
- Friday, Dec. 13, 9:30 a.m., Wayne fourth graders at Wayne State's Haun Building.
- Monday, Dec. 16, 2:15 p.m., Wayne first graders at the Wayne Care Centre.
- Tuesday, Dec. 17, 10:30 a.m., Wayne third graders at Kids' Closet.

#### Winside concerts

WINSIDE - Winside elementary students will perform their Christmas concert tonight (Monday) at 7:30 p.m. in the high school gym.

The junior high and high school concert will be presented Monday, Dec. 16 at 7:30 p.m.

The public is invited to attend both programs.



#### Weather

Lucas Brugger, Age 8  
District 51  
Extended Weather Forecast:  
Slight chance of rain or snow Monday, otherwise no significant precipitation. Highs will be in the 40s with lows in the 20s.

### UNMC sets sights here

## Wayne to be RHEN site

By Mark Crist  
Managing Editor

A program that started at the University of Nebraska Medical Center that has spread across the University of Nebraska system appears to have some long-reaching effects for the state and rural hospitals.

That was the message delivered by three associates from the University of Nebraska Medical Center Thursday during a visit with Wayne businessmen, college officials and health professionals.

The UNMC officials stopped for a luncheon to gather input on how to run the Rural Health Education Network (RHEN).

ACCORDING TO Math-Science Division Head Dr. J.S. Johar, the program coordinates well with the

RHOP (Rural Health Opportunities Program) adopted by the college earlier this year. RHOP provides undergraduate students interested in going into the medical profession in rural areas, the chance to study for two years at either Chadron State College or Wayne State College, while preparing for medical school. Upon admittance to the program, undergraduates are almost guaranteed of acceptance into programs at UNMC.

"It's not going to affect us dramatically but we hope that RHOP students who have gone through here will be able to return," Johar said. "It's a continuation of the RHOP program."

The purpose of RHEN is to change how and where primary care students at UNMC are educated. The endeavor will require a unique partnership among rural

communities, primary health care providers, health care institutions, higher education institutions and UNMC.

UNDER THE program, there will be eight spoke communities in Scottsbluff, North Platte, Kearney, Grand Island, Hastings, Lincoln, Omaha and Norfolk.

Communities in The Wayne Herald coverage area which will be affected by the program include Wayne and Wakefield. These two communities will be spoke communities to the Norfolk hub. Overall, there are 93 spoke communities in the state.

"We need your help in identifying young people from rural areas who want to return to rural areas," said Jesse Edwards, program direc-

See RHEN, page 3

## Week three winners listed

Week three winners were drawn Friday in the Wayne Area Chamber of Commerce's Holiday Magic drawing. This week there were 30 winners for a total of \$501.

The following is a list of the week three drawing winners.

Wayne Gilliland, Wayne, \$19, The Final Touch; Linda Moser, Carroll, \$18, Hair Studio; Don Schulz, Wayne, \$5, Doescher's Appliance; Mardella Olson, Wayne, \$5, State National Bank.

Gwen Allemann, Pilger, \$16, Wayne Greenhouse; Bev Holdorf, Wisner, \$19, Pamida; Donna Frevert, Wakefield, \$5, PoPo's; Donna Hansen, Wayne, \$7, PoPo's.

Mrs. Merle Beckner, Wayne, \$50, Doescher's Appliance; Michelle Linder, Wayne, \$5, Sav-Mor Pharmacy; Reuben Meyer, Wayne, \$14, Tom's Body and Paint Shop.

INEZ BAKER, Wayne, \$50, Wessel's DDS; Teresa Sachau, Allen, \$39, Wayne Vision Center; Gracia Gubbels, Wayne, \$16, Medicap Pharmacy; Marlene Fleming, Wayne, \$6, Wayne Greenhouse.

Jennifer Fields, Wayne, \$22, Pac 'N' Save; Trixie Newman, Wayne, \$37, Pac 'N' Save; Jan Topp, Pilger, \$5, Ellingson Motors; Roger Nie-

mann, Wayne, \$14, Pamida.

Violet Ring, Wakefield, \$5, First National Bank; Angie Bremerman, Wayne, \$5, First National Bank; Wayne Wessel, Wayne, \$13, Nutrena Feeds; Susan Schroeder, Wayne, \$10, Sav-Mor Pharmacy.

Leland Herman, Wayne, \$6, El Toro; Lois Miller, Hoskins, \$50, Magnuson Eye Care; Schott Schultz, Wakefield, \$10, Sav-Mor Pharmacy; Rick Kay, Wakefield, \$20, Fredrickson Oil.

Sophia Morris, Wayne, \$5, Carhart Lumber Company; Lori Dean, Wayne, \$8, Rain Tree Liquor; Morris Jenkins, Wayne, \$19, Sav-Mor Pharmacy.

## Burglars strike at Hoskins bars

Two burglaries were reported Wednesday, Dec. 4 to the Wayne County Sheriff's Office.

The burglaries, which occurred at Dad's Place and Big Ern's in Hoskins, were believed to have occurred between 2 a.m. and 6 a.m. Wednesday.

According to Wayne County Sheriff LeRoy Janssen, entry was gained into the Hoskins liquor establishments by breaking into the front doors of both places.

He said it is believed that the doors were pried apart, loosening the lock from the frame. He said a hammer was found left at the scene but it was undetermined whether the hammer was used to gain entry.

TAKEN DURING the burglaries was beer, cigarettes and money in the form of large amounts of coins. The dollar amounts for loss and

damage are undetermined at this time.

The incident was reported to the Sheriff's office around 8:15 a.m. Wednesday. Janssen said information about the burglaries is being sought but, he added, there are no apparent witnesses.

No suspects are in custody at this time and the investigation is continuing. Janssen said Friday that suspects in the matter have not been narrowed down.

## Sheriff responds to early morning accident

The Wayne County Sheriff's Department was called at about 6 a.m. Friday, Dec. 6 to investigate a pickup-truck accident four miles east of Wayne on Highway 35.

According to Wayne County Sheriff LeRoy Janssen, a northbound, unloaded semi-tractor and

trailer driven by Thomas Hattig, 34, of rural Wayne, was unable to stop on the icy county road intersection and a westbound pickup driven by James Rutor, 29, Pender, was also unable to stop in time to avoid going under the trailer of the semi.

AS A RESULT of the accident,

the Wayne Fire and Rescue Teams and Providence Medical Center's ambulance crew freed Rutor from the wreckage. Janssen said Rutor was freed using jaws for life.

Following the accident, Rutor

See SHERIFF, page 3



Photography: Mark Crist

## A visit from Santa

SHANE DOHMAN AND AMANDA YOUNG, youngsters in the Wayne Area Kinship program got to see Santa Thursday night during Kinship's Christmas party for volunteers, children and their matches. Kinship is a volunteer organization designed to match adult volunteers with children who have a need for a special friendship for a variety of reasons. Once a week, volunteers and children spend an hour together to strengthen friendships. Providing goodies for the party were the Wayne Pizza Hut, Godfather's of Wayne and the Wayne Dairy Queen.







# Letters to Santa

**Dear Santa,**  
I want a Oopsis Daisy with the pacifier. I have been good helping my Mom. I have a little brother named John and a big brother named David. I would like John to have a fire truck to ride on with the weebles inside. David wants roller blades for Christmas. David has been good helping John. Have a Merry Christmas.  
Michelle Murray

**Dear Santa,**  
I love you. I want a feeding baby. I help my Mom.  
Kelsey Skinner

**Dear Santa,**  
I want new toys. My sister Mirisa needs toys too.  
Danica Carroll

**Dear Santa,**  
I want a slush maker. I want an ice cream maker.  
Kristine Brummond

**Dear Santa,**  
I want a glow Minnie Mouse and a little flashlight.  
Jenne Brummond  
P.S. Please bring my baby sister Elizabeth a doll. We will leave you cookies and milk. We love you.

**Dear Santa,**  
I've been a good boy. I've been nice to my sister. I sometimes hit her, but I'm sorry. Will you come to my house, please? We live in Nebraska. Please bring me one more dump truck, lots of tractors, a new piggy bank, a remote control car and a life animal and it should be a cat.  
I hope to see you in the living room putting my stuff down. You're a real nice guy. Your sleigh is too big for our doors, so you'll have to leave that outside and just bring your bags in. I hope the kitty is wrapped.  
Jesse Dunklau, 3 1/2

**Dear Santa,**  
I want a walking kitty. I want a new doll. I want a Little Mermaid tape. I want a new walking doll. I want a new Sesame Street Big Bird. I have been good.  
Amber Surber

## District court has arraignments for three facing drug charges

Three people facing drug-related felony charges were arraigned Wednesday in the Wayne County District Court.

Arraignment hearings were held for Kenneth Loschen, Jody Palu and Stephen C. Carlson. Loschen faces three counts of delivery of a controlled substance, Palu faces one charge of aiding and abetting the delivery of a controlled substance and Carlson faces two counts of information to deliver a controlled substance.

Loschen, who was arrested Nov. 14, 1990, Jan. 3, 1991 and Jan. 17, 1991 at an unspecified location in Wayne County, appeared with his attorney Douglas J. Stratton and entered a plea of not guilty. Jury trial was set for Feb. 10. Delivery of

a controlled substance is a Class III felony.

PALU, WHO was arrested Nov. 14, 1990 in Wayne County, appeared with her attorney Ronald J. Albin. Palu stood mute on her plea and the court entered a plea of not guilty on her behalf. Jury trial was set for Feb. 10. Aiding and abetting the delivery of a controlled substance is a Class III felony.

Carlson, who was arrested Dec. 7, 1990 and Jan. 3, 1991 in Wayne County, appeared with his attorney John T. Kinsler. He pled not guilty to both counts. Carlson's trial was set for Feb. 10. Information to deliver a controlled substance is a Class III felony.

# RHEN

Continued from page 1

tor for the physicians assistant program at UNMC. "We give preference to those students who come from rural areas."

RHEN'S GOALS include:  
• Improve the availability of health care professionals to underserved areas of the state.

• Stimulate early student interest in rural health care.

• Involve community health care professionals, students and faculty in developing a model for rural health care delivery, particularly for populations at risk.

• Provide interaction and socialization between members of various health care disciplines and between students, rural health professionals and community residents.

## 'Touch of Brass' performs Dec. 15

A musical performance celebrating Christmas will be performed by A Touch of Brass at the John G. Neihardt Center in Bancroft on Sunday, Dec. 15 at 2 p.m.

A Touch of Brass is a five-piece ensemble consisting of two trumpets, French horn, trombone and tuba. They play a variety of music, ranging from seventeenth century baroque to twentieth century pop. For the concert at the Neihardt Center, they will perform several Christmas selections, including "Parade of the Wooden Soldiers," "Silent Night," "Indian Christmas Carol" and "Rudolph the Red-Nosed Reindeer."

Members of the quintet are from northeast Nebraska. Keith Krueger, on trumpet, is a former member of the Air Force Band, and currently farms near Wakefield. He is joined on trumpet by Greg Bergman, a student at Wayne State College. On French

horn is Loralee Hunzeker, a counselor at Wayne State. Keith Kopperud, band teacher at Wayne Middle School, plays tuba. On trombone is Ray Kelton, who until his retirement, was director of bands at Wayne State.

Following the performance, Christmas cookies and punch will be served. The program at Neihardt Center is free and open to the public.

## Obituaries

### Howard Paulson

Howard Paulson, age 70, of Laurel, died Thursday, Dec. 5, 1991 at Providence Medical Center.

Services were held Saturday, Dec. 7 at 2 p.m. at the United Lutheran Church in Laurel. The Rev. Kenneth Marquardt officiated.

Howard Dwight Paulson, the son of Albert and Lucille Gildersleeve Paulson, was born Aug. 16, 1921 on a farm near Wayne. He was confirmed at Immanuel Lutheran Church in Coleridge. He attended rural school near Dixon. He married Mildred Irene Roenfeldt Jan. 25, 1944 at Coleridge. The couple farmed in the Dixon and Laurel areas where he was a school board member of Districts 31 and 114. He was also a member of the Rural Telephone Board and United Lutheran Church of Laurel.

Survivors include his wife; one son and daughter-in-law, Dwight and Kathy Paulson of Laurel; one daughter and son-in-law, Dorothy and Robert Patefield of Laurel; five grandchildren, one sister, Venita Booth of Lacon, Ill.; nieces and nephews.

He was preceded in death by both parents, one brother, and one sister.

Pallbearers were John Hochstein, Wilbur Rath, Walt Huetting, Gary Lute, Rod Graf and Herman Vollersen.

Burial was in the Laurel Cemetery with Schumacher-McBride-Wiltse Funeral Home of Wayne in charge of arrangements.

### Hazel Niemann

Funeral services are pending at Schumacher-McBride-Wiltse Funeral Home in Winside for Hazel Niemann, 73 of Winside. She died Thursday, Dec. 5, 1991 at Lutheran Community Hospital in Norfolk.

## News Brief

### Installing Carroll postmaster

CARROLL - Sandra Adkins will be installed as the new postmaster at Carroll during ceremonies on Thursday, Dec. 12.

The public is invited to attend the ceremony at 4 p.m. at the Carroll Post Office.

## Sheriff

Continued from page 1

to the hospital.

The 1979 Ford Courier pickup, driven by Rutor, was totaled in the accident. Janssen said the semi-tractor trailer had no known damage.

Both drivers were reportedly wearing seatbelts.

**WEIRD IS RELATIVE**  
Nightly 7:15 Late Shows Fri Sat Tue 9:15 Bargain Tues Sun Matinee 2 pm @ \$2.50

**all i want for CHRISTMAS**  
Nightly at 7:15 Fri Late Fri Sat Tue 9:15 Bargain Mat. Sun 2 pm Bargain Night Tue 7:15 & 9:15 only \$2.50

**FREE CHRISTMAS MATINEE**  
**SHIP WRECKED**  
SATURDAY, DEC. 7, AT 2:00 PM  
PICK UP FREE TICKETS AT SPONSORS

**Include us in the Wedding of the Year**

**JAMMER PHOTOGRAPHY**  
WEDDING PHOTOGRAPHY  
217 MAIN • WAYNE, NE.  
402-375-2363

**Madonna's Wedding Belle**  
"HIGH QUALITY GUARANTEED CUSTOM-MADE GOWNS"  
"FLUX RENTAL"  
"SILK FLOWER ARRANGEMENTS"  
"INVITATIONS"  
"VEILS"  
"DYABLE SHOES & FABRICS"  
"ACCESSORIES"  
"PROM ATTIRE"  
Open 9:30 - 5:00 Mon - Sat  
Thursday til 8:00  
Madonna Platt, Owner  
402-371-3409  
439 Norfolk Ave. Norfolk, NE

**Check our Deli for your wedding reception needs!**  
Ask about Meat and Cheese, Vegetable, or Fruit Trays. Our Deli Department will also decorate cakes to specifications.

**WAYNE'S PAC'N'SAVE DISCOUNT SUPERMARKETS**  
West Hiway 35  
Wayne, Nebraska  
Telephone: 375-1202

**Wedding Registry**  
Custom Imprinted Wedding and Shower  
**Napkins**  
**Attendant's Gifts**  
Hallmark  
**Wedding Albums**

Sav-Mor Pharmacy 1022 Main 375-1444

**FOR THE BEST DRESSED GROOM**  
Presenting masculine sophistication by Lord West. Bold in attitude and handsome in design will make your new bride proud to say her groom wore a Lord West!

**SURBERS SURBERS**  
202 MAIN STREET WAYNE

**Blackburns' Catering & Bakery**  
Our Catering Service, complete with all the finishing touches, can design those special trays for you...  
•Finger Sandwiches, Meats, Cheeses, Relish, Fruits, Punch, Mints  
•Nuts •Complete Dinner Reception, Waiters Available  
•Beautifully Decorated Wedding Cakes

"We give it that personal touch"  
429 Norfolk Ave.  
371-6120  
Sunset Plaza  
371-3094  
Norfolk, Nebraska  
Stop in or call...

**HOLIDAY MAGIC CASH**  
S-T-R-E-T-C-H your holiday cash!  
The State National Bank & Trust Co. will help by giving  
**\$105 in Chamber Bucks for \$100 cash**  
now in effect for area residents. For each \$100 in cash you will receive \$105 in Chamber Bucks redeemable at any member business of the Wayne Area Chamber of Commerce...

*This special limited supply offer is available ONLY at State National Bank & Trust Company in Wayne under the following rules:*

1. Chamber Bucks must be purchased in \$100 cash amounts only.
2. \$105 in Chamber Bucks is the limit per person.
3. This Holiday Magic Cash must be used by March 31, 1992.
4. You must personally make the purchase at either of our locations.

**Happy Holidays from**  
**The State National Bank and Trust Company**  
Wayne, NE 68787 • 402/375-1130 • Member FDIC  
Main Bank 116 West 1st • Drive-In Bank 10th & Main

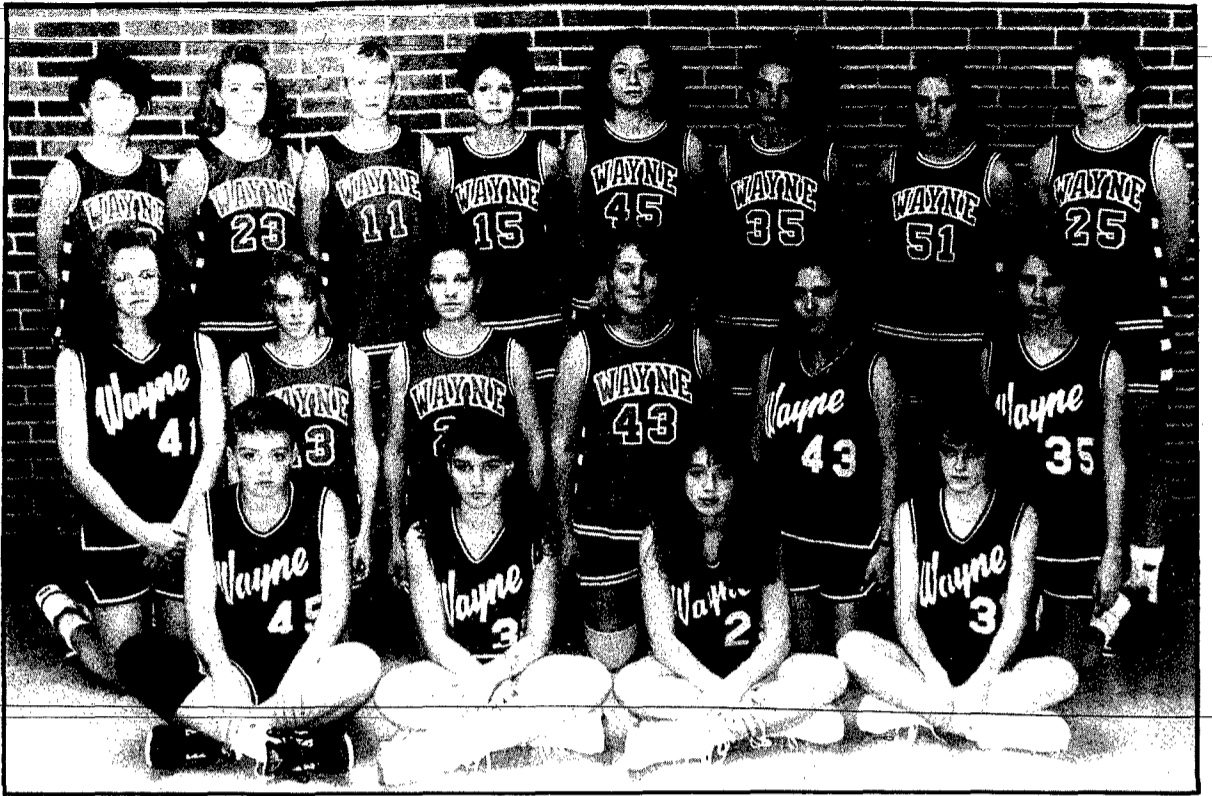
**NEBRASKALAND Magazine's 1992 CALENDAR**

**NOW ON SALE AT THE WAYNE HERALD**

**\$5.50 PLUS TAX**

## WE SUPPORT WAYNE-CARROLL GIRLS BASKETBALL

STATE NATIONAL INSURANCE  
WAYNE VISION CENTER  
SAV-MOR PHARMACY  
FIRST NATIONAL BANK, MEMBER FDIC  
LOGAN VALLEY IMPLEMENT  
PAMIDA  
WAYNE CARE CENTER  
SCHUMACHER MCBRIDE WILTSE FUNERAL HOMES  
•WAYNE •CARROLL •LAUREL •WINSIDE  
WAYNE AUTO PARTS  
HARDEE'S  
MAGNUSON EYE CARE  
PAC'N'SAVE  
TOM'S BODY SHOP  
FREDRICKSON OIL CO.  
WAYNE SPORTING GOODS  
CARHART LUMBER CO.  
OFFICE CONNECTION  
JAMMER PHOTOGRAPHY  
FARMERS & MERCHANTS STATE BANK  
MEMBER FDIC  
TWJ FEEDS, INC. - CARROLL  
KAUPS TV  
M & H APCO - BOB NELSON, MGR.  
STATE NATIONAL BANK, MEMBER FDIC  
DAVE'S BODY SHOP  
FIRST NATIONAL INSURANCE AGENCY  
DAYLIGHT DONUTS  
KOPLINS AUTO SUPPLY  
TACO STOP  
TERRA INTERNATIONAL INC.  
GODFATHER'S PIZZA  
ELLINGSON MOTORS  
MIDLAND EQUIPMENT  
DOESCHER APPLIANCE  
THE WAYNE HERALD & MARKETER  
KTCH  
NORTHEAST NEBRASKA ROCKET  
RAINTREE DRIVE-IN LIQUOR  
PEOPLES NATURAL GAS CO.  
ZACH OIL & PROPANE  
FARM BUREAU INSURANCE, STEVE JORGENSEN, AGENT  
JONES INTERCABLE



## WAYNE GIRLS BASKETBALL

MEMBERS OF THE WAYNE girls basketball team this year include from back row left to right: Jenny Thompson, Angie Thompson, Susie Ensz, Danielle Nelson, Erin Pick, Liz Reeg, Kim Kruse, Jenny Thomsen. Middle row: Traci Oborny, Carrie Fink, Tami Schluns, Audra Sievers, Adriana Sailhan, Heather Nichols. Front row: Amy Ehrhardt, Molly Melena, Amy Post, Wendy Beiermann. Not pictured is Angie Hudson.



## WAYNE BOYS BASKETBALL

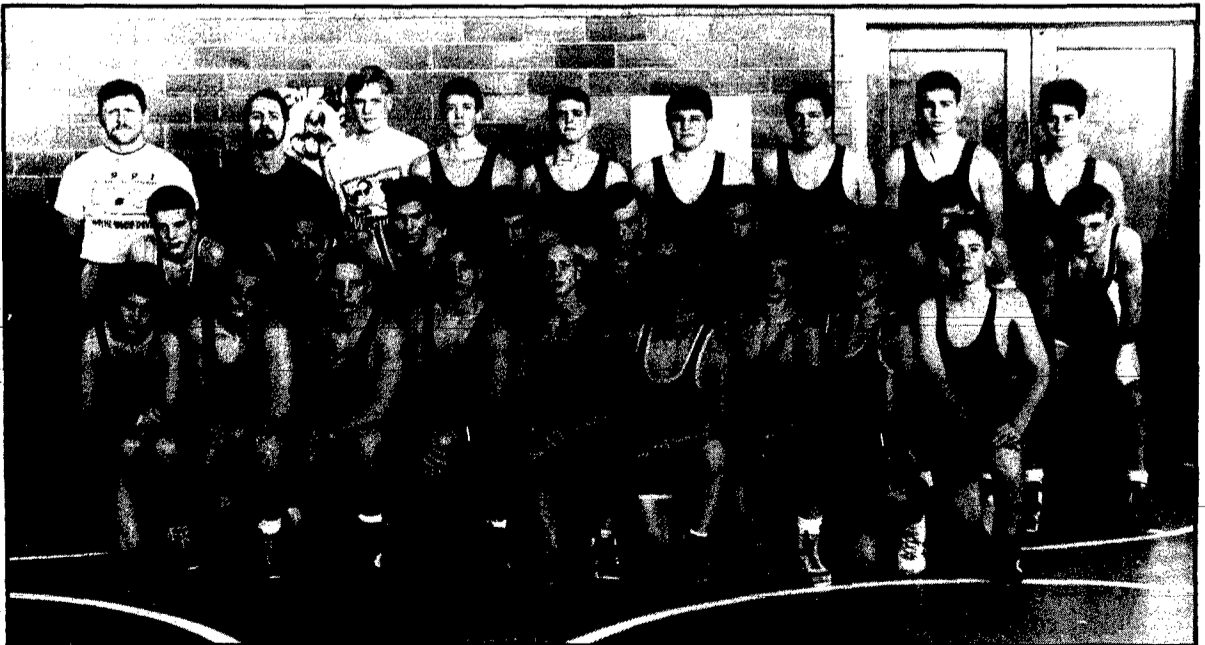
MEMBERS OF THE WAYNE boys basketball team this year include from back row left to right: Brad Uhing, Matt Blomenkamp, Robert Bell, Mike Fluent, Kyle Dahl, Regg Carnes, Matt Ley. Front row: Bobby Barnes, Nate Stednitz, David Sorensen, Aaron Geiger, Randy Kaup, Mark Meyer.

## WE SUPPORT WAYNE-CARROLL BOYS BASKETBALL

STATE NATIONAL INSURANCE  
WAYNE VISION CENTER  
SAV-MOR PHARMACY  
FIRST NATIONAL BANK, MEMBER FDIC  
LOGAN VALLEY IMPLEMENT  
PAMIDA  
WAYNE CARE CENTER  
SCHUMACHER MCBRIDE WILTSE FUNERAL HOMES  
•WAYNE •CARROLL •LAUREL •WINSIDE  
WAYNE AUTO PARTS  
HARDEE'S  
MAGNUSON EYE CARE  
PAC'N'SAVE  
TOM'S BODY SHOP  
FREDRICKSON OIL CO.  
WAYNE SPORTING GOODS  
CARHART LUMBER CO.  
OFFICE CONNECTION  
JAMMER PHOTOGRAPHY  
FARMERS & MERCHANTS STATE BANK  
MEMBER FDIC  
TWJ FEEDS, INC. - CARROLL  
KAUPS TV  
M & H APCO - BOB NELSON, MGR.  
STATE NATIONAL BANK, MEMBER FDIC  
DAVE'S BODY SHOP  
FIRST NATIONAL INSURANCE AGENCY  
DAYLIGHT DONUTS  
KOPLINS AUTO SUPPLY  
TACO STOP  
TERRA INTERNATIONAL INC.  
GODFATHER'S PIZZA  
ELLINGSON MOTORS  
MIDLAND EQUIPMENT  
DOESCHER APPLIANCE  
THE WAYNE HERALD & MARKETER  
KTCH  
NORTHEAST NEBRASKA ROCKET  
RAINTREE DRIVE-IN LIQUOR  
PEOPLES NATURAL GAS CO.  
ZACH OIL & PROPANE  
FARM BUREAU INSURANCE, STEVE JORGENSEN, AGENT  
JONES INTERCABLE

## WE SUPPORT WAYNE-CARROLL WRESTLING

STATE NATIONAL INSURANCE  
WAYNE VISION CENTER  
SAV-MOR PHARMACY  
FIRST NATIONAL BANK, MEMBER FDIC  
LOGAN VALLEY IMPLEMENT  
PAMIDA  
WAYNE CARE CENTER  
SCHUMACHER MCBRIDE WILTSE FUNERAL HOMES  
•WAYNE •CARROLL •LAUREL •WINSIDE  
WAYNE AUTO PARTS  
HARDEE'S  
MAGNUSON EYE CARE  
PAC'N'SAVE  
TOM'S BODY SHOP  
FREDRICKSON OIL CO.  
WAYNE SPORTING GOODS  
CARHART LUMBER CO.  
OFFICE CONNECTION  
JAMMER PHOTOGRAPHY  
FARMERS & MERCHANTS STATE BANK  
MEMBER FDIC  
TWJ FEEDS, INC. - CARROLL  
KAUPS TV  
M & H APCO - BOB NELSON, MGR.  
STATE NATIONAL BANK, MEMBER FDIC  
DAVE'S BODY SHOP  
FIRST NATIONAL INSURANCE AGENCY  
DAYLIGHT DONUTS  
KOPLINS AUTO SUPPLY  
TACO STOP  
TERRA INTERNATIONAL INC.  
GODFATHER'S PIZZA  
ELLINGSON MOTORS  
MIDLAND EQUIPMENT  
DOESCHER APPLIANCE  
THE WAYNE HERALD & MARKETER  
KTCH  
NORTHEAST NEBRASKA ROCKET  
RAINTREE DRIVE-IN LIQUOR  
PEOPLES NATURAL GAS CO.  
ZACH OIL & PROPANE  
FARM BUREAU INSURANCE, STEVE JORGENSEN, AGENT  
JONES INTERCABLE



## WAYNE WRESTLING

MEMBERS OF THE WAYNE wrestling team for this season include from back row left to right: Asst. coach Aaron Schuett, head coach John Murtaugh, student manager Jeremy Sievers, Randy Johnson, Jason Fink, Jeff Hamer, Leon Brasch, Dwaine Junck, Jason Shultheis. Middle row: Andy Metz, Doug Hank, Juan Mota, Brian Gamble, Brent Gamble, Steve Hansen, Dusty Jensen, Chad Paysen and Terry Rutenbeck. Front row: Chris Headley, Matt Rise, Chris Fredrickson, Jason Wehrer, Mike Williams, Ryan Brown, Cory Erxleben, Jeremy Sturm, Brent Geiger.



## WE SUPPORT WINSIDE GIRLS BASKETBALL

SCHUMACHER MCBRIDE WILTSE FUNERAL HOMES  
•WAYNE •CARROLL •LAUREL •WINSIDE

FARMERS COOP  
PILGER & WINSIDE

WINSIDE STATE BANK, MEMBER FDIC

WINSIDE STOP INN

WINSIDE ALFALFA DEHY, INC.

LEE & ROSIE'S

SHELLEY'S SALOON

OBERLE'S MARKET

COMMERCIAL STATE BANK, HOSKINS  
MEMBER FDIC

LA SALON II, FAMILY HAIR CARE  
WINSIDE & HOSKINS

THE WAYNE HERALD & MARKETER

NORTHEAST NEBRASKA ROCKET

WINSIDE ANIMAL CLINIC



## WINSIDE GIRLS BASKETBALL

MEMBERS OF THE WINSIDE girls basketball team this season include from back row left to right: Asst. coach Todd Lavelle, Christi Mundil, Kari Pichler, Wendy Rabe, Jenny Jacobsen, Patty Oberle, Holly Holdorf, Yolanda Sievers, head coach Paul Giesselmann. Front row: Tammy Thies, Sara Painter, Mindi Marotz, Heather Fisher, Katherine Bussey, Chris Colwell, Kate Schwedhelm. Not pictured is Margaret Brugger, Tawnya Krueger, Melinda Mohr, Becky Appel, Jean Severson, Sarah Rademacher and Stacy Bowers.



## WINSIDE BOYS BASKETBALL

MEMBERS OF THE WINSIDE boys basketball team for the season include from back row left to right: Head coach Shannon Pospisil, John Hancock, Jason Paulsen, Cory Jensen, Cam Shelton, Cory Miller, Derek VanHouten, Jeremy Bruggeman, Jeff Bruggeman and asst. coach Tom Schmit. Front row: Ryan Brogren, Colby Jensen, Jeremy Jenkins, Josh Behmer, Jayme Shelton, Matt Behmer, Marty Jorgensen, and student manager Trent Trautman.

## WE SUPPORT WINSIDE BOYS BASKETBALL

SCHUMACHER MCBRIDE WILTSE FUNERAL HOMES  
•WAYNE •CARROLL •LAUREL •WINSIDE

FARMERS COOP  
PILGER & WINSIDE

WINSIDE STATE BANK, MEMBER FDIC

WINSIDE STOP INN

WINSIDE ALFALFA DEHY, INC.

LEE & ROSIE'S

SHELLEY'S SALOON

OBERLE'S MARKET

COMMERCIAL STATE BANK, HOSKINS  
MEMBER FDIC

LA SALON II, FAMILY HAIR CARE  
WINSIDE & HOSKINS

THE WAYNE HERALD & MARKETER

NORTHEAST NEBRASKA ROCKET

WINSIDE ANIMAL CLINIC

## WE SUPPORT WINSIDE WRESTLING

SCHUMACHER MCBRIDE WILTSE FUNERAL HOMES  
•WAYNE •CARROLL •LAUREL •WINSIDE

FARMERS COOP  
PILGER & WINSIDE

WINSIDE STATE BANK, MEMBER FDIC

WINSIDE STOP INN

WINSIDE ALFALFA DEHY, INC.

LEE & ROSIE'S

SHELLEY'S SALOON

OBERLE'S MARKET

COMMERCIAL STATE BANK, HOSKINS  
MEMBER FDIC

LA SALON II, FAMILY HAIR CARE  
WINSIDE & HOSKINS

THE WAYNE HERALD & MARKETER

NORTHEAST NEBRASKA ROCKET

WINSIDE ANIMAL CLINIC



## WINSIDE WRESTLING

MEMBERS OF THE WINSIDE wrestling team this year include from back row left to right: Student mangers Laurel Dubois, Amy Thompson, Jason Topp, Don Nelson, Trevor Topp, Jason Krueger, Jason Magwire, head coach Paul Sok. Front row: Kyle Fredrick, Benjamin Wittler, Scott Jacobsen, Jason Wylie, Marc Janssen, Chris Mann, Kurt Jaeger, Lonnie Grothe. Missing are Brady Frahm and Nicky Cushing, student manager.

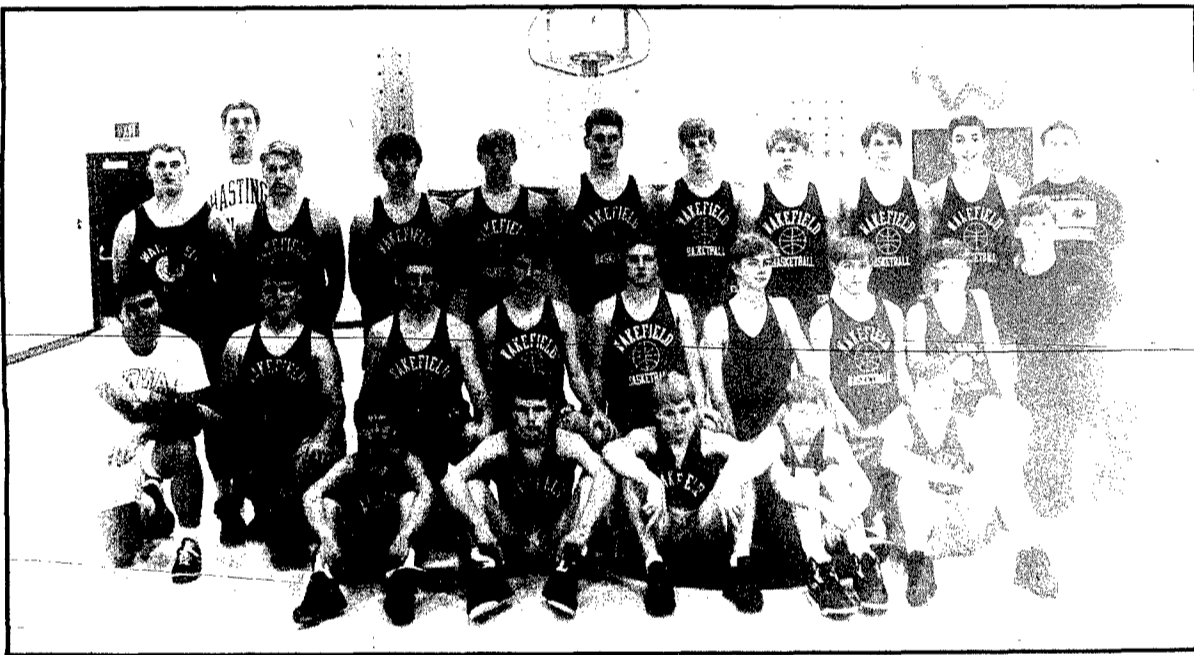
## WE SUPPORT WAKEFIELD GIRLS BASKETBALL

ANDERSON LUMBER CO.  
 BENNE'S PACKAGE LIQUOR  
 A.D. BROWN PLUMBING & HEATING  
 FAIR STORE  
 NORTHEAST COOP  
 KORNER MART  
 KRATKE OIL  
 SALMON WELL CO.  
 SCHROEDER AGRI BUSINESS INC.  
 TOOTIE'S BEAUTY SHOP  
 WAKEFIELD CLEANERS  
 MILTON G. WALDBAUM & CO.  
 TANGLES  
 DR. PAUL BYERS D.D.S.  
 IVADELL BURCHAM REAL ESTATE



## WAKEFIELD GIRLS BASKETBALL

MEMBERS OF THE WAKEFIELD girls basketball team this season include from back row left to right: Lisa Anderson, Kristen Miller, Lisa Blecke, Sarah Salmon, Heidi Muller, Angie Peterson, Rebecca Goos, Cindy Torczon, Maria Eaton. Middle row: Student manager Rachel Dutcher, Jamie Ad-dink, Alyssa Utecht, Kali Baker, Melissa Haglund, Val Fischer, Melissa Wirth, Kathy Otte, Allison Benson, manager. Front row: Suzann Ekberg, Tammy Sandahl, Stacey Preston, Jamie Oswald, Mary Torczon and Carly Salmon.



## WAKEFIELD BOYS BASKETBALL

MEMBERS OF THE WAKEFIELD boys basketball this season include from back row left to right: Ben Dutton, head coach Brad Hoskins, Jon Johnson, Steve Clark, Brandon Benson, Dalton Rhodes, Craig Anderson, Ryan Ekberg, Todd Mattson, Lucas Tappe, asst. coach Arnie Cerny. Middle row: Asst. coach Rick Roberts, Dave Jensen, Brad Nuernberger, Marcus Tappe, Anthony Brown, Andy Muller, Cory Brown, Brook Lundahl, asst. coach Stuart Clark. Front row: Brian Johnson, Miah Johnson, T.J. Preston, Mike McQuistan, Cody Skinner. Not pictured is Larry Johnson.

## WE SUPPORT WAKEFIELD BOYS BASKETBALL

ANDERSON LUMBER CO.  
 BENNE'S PACKAGE LIQUOR  
 A.D. BROWN PLUMBING & HEATING  
 FAIR STORE  
 NORTHEAST COOP  
 KORNER MART  
 KRATKE OIL  
 SALMON WELL CO.  
 SCHROEDER AGRI BUSINESS INC.  
 TOOTIE'S BEAUTY SHOP  
 WAKEFIELD CLEANERS  
 MILTON G. WALDBAUM & CO.  
 TANGLES  
 DR. PAUL BYERS D.D.S.  
 IVADELL BURCHAM REAL ESTATE  
 TOM'S HOME & LAWN SERVICE

### Sports Briefs

#### Junior high basketball tournament

WAYNE-The seventh and eighth grade basketball teams will host a tournament on Dec. 14 and 16th at the City Auditorium and Wayne High School. The girls will play West Point at 9:30 a.m. on the 14th at the City Auditorium. If they win they place at 6:15 p.m. on the 16th at the high school against the winner of Pierce and Hartington. If Wayne loses the first game they would play at 1 p.m. at the high school on the 14th.

The Wayne eighth graders will play West Point at 10:45 a.m. at the high school on the 14th with the championship slated for 7:30 p.m. on the 16th. The consolation game is slated for 2:15 p.m. on the 14th.

The Wayne seventh graders will play West Point at 9:30 a.m. on the 14th with the championship game at 5 p.m. on the 16th. The consolation game is slated for 1 p.m. on the 14th.

#### City rec basketball schedule

WAYNE-Men's City Recreation Basketball-practice has begun in Wayne with practice session held on Mondays, Tuesdays and Wednesdays at the City Auditorium in Wayne.

Two sessions will be held each night which began on Monday. Sessions will run from 7-8:30 p.m. and 8:30-10 p.m. Those who did not play last year in league are asked to attend the early session.

League play will begin on Jan. 6 and will run for 15 weeks. The cost is \$25 per person and is due prior to the start of league games. If you are unable to attend a pre-league session or have any questions, contact Jeri Morris at 375-5435.

The "A" League is set for Mondays and is slated for anyone from Wayne between the ages of 19-26. "B" League is slated for Tuesdays and is for anyone between 27-35 years of age and the "C" League is for ages 36 and over and is slated for Wednesdays.

The practice sessions on these days are for those age groups. One practice session per week is held.

Women's city rec basketball will begin on Tuesday, Dec. 17 at 6 p.m. in the auditorium. Any female interested in playing basketball is encouraged to attend so a league can be formed. If unable to attend on Tuesdays but interested in playing contact Morris.

#### Seventh grade boys down Pender

WAYNE-The seventh grade boys basketball team notched their first victory of the season last week with a 29-9 win over Pender in Wayne. Monte Tilgner's squad was led by Nick Vanhorn with 10 points and 10 rebounds while Matt Morrison scored eight points. Paul Blomenkamp had seven points and hauled down eight rebounds.

## Trojans split with Pender

The Wakefield Trojans girls and boys basketball teams opened the season with a home contest against Pender Thursday night and with the new season comes a new head coach for the boys as Brod Hoskens debuted for Wakefield, taking the place of Paul Eaton.

Hoskens was unsuccessful in his first outing as Pender defeated Wakefield 59-47. The score was knotted at 12 after the first period but Pender doubled Wakefield's count in the second quarter to lead 28-20 at the intermission.

The Trojans trimmed the lead to six at 41-35 after three quarters but could not overcome the visitors lead. "I think we just suffered some first game jitters," Hoskens said. "We were just 17-57 from the field so we got the shots we wanted but they just didn't fall for us."

Hoskens gave Pender a lot of credit for their play. "Pender has a real good team and they have good size," Hoskens said. "All five of their starters finished in double figures in scoring."

Wakefield's Achilles heel proved to be the second quarter according to Hoskens. "We just didn't play good defense in the second quarter," Hoskens said. "We allowed Pender to score six real easy points which hurt us."

The Trojans had cut the lead to five in the fourth period and had possession of the ball hoping to trim at least two more points off the deficit when they suffered a turnover which led to an easy

bucket for Pender. That put the visitors back up by seven with well under three minutes to go in the game.

Anthony Brown led the Trojans in scoring with 24 points including three 3-pointers. Marcus Tappe had nine points all on 3-pointers and Ben Dutton scored nine as well. Steve Clark added three on a long jumper and Dalton Rhodes rounded out the attack with two.

Pender outrebounded the host team 41-39 despite 11 caroms by Dutton and nine from Brown. Wakefield had 23 turnovers compared to 25 for Pender. Wakefield was 6-16 from the foul line while Pender was 13-23.

#### Trojans girls win

The Wakefield girls jumped out to a 12-4 lead after one quarter of play and hung on for a 43-39 win in their opener. Second-year Coach Gregg Cruickshank watched as his team built a 22-8 lead before suffering some foul trouble late in the first half which allowed Pender to score the last five points of the second period to close the gap to 22-13.

The nine point lead was trimmed to eight after the third period at 31-23 and Pender outscored Wakefield 12-4 to start the final period to tie the game up at 35. Wakefield was further hampered when leading scorer Lisa Blecke fouled out with five minutes left in the game.

Kristen Miller, however, rose to the occasion and sank four of five free throw attempts down the

stretch to preserve a Trojan victory. "It was your typical first game," Cruickshank said. "There were over 45 turnovers and fouls but we were pleased to come away with the win to start our season off on the right foot."

Blecke led the Trojans with 21 points while Angi Peterson scored seven. Kristen Miller finished with six and Sarah Salmon netted five. Lisa Anderson rounded out the attack with four points.

Wakefield won the battle of the boards, 40-37 as Blecke and Salmon led the way with nine and seven caroms respectively. Wakefield committed 24 turnovers while Pender suffered 22. Both teams shot free throws poorly with Wakefield hitting 7-19 while Pender was 5-19.

"Our kids gave a good effort," Cruickshank said. "We played well together and they really did a nice job when Blecke fouled out."

## WSC women lose by 17 to Metro St.

The Wayne State women's basketball team fell to 2-2 following an 87-70 setback to Metro State Thursday night in Kearney in the first game of the Loper Classic.

Mike Barry's squad 41-32 at the intermission was outscored 46-38 in the second half. The Wildcats shot a dismal 19-62 from the field for 31 percent while Metro State shot an unbelievable 29-52 from the field for 56 percent.

WSC was 31-48 in free throw shooting while Metro State was 24-34. Dana Olmsted led the Wildcats in scoring with 14 points while Mary Schnitzler and Lisa Chamberlin netted 11 each. Jodi Otjen was also in double figures with 10.

Linda Heller finished with eight points while Lynn Nohr scored five and Cheri VanAuker, four. Cyndi Savage, Kristi Twait and Heather Rotherham scored two points apiece and Tawnya Bakke rounded out the scoring with one point.

The Wildcats dominated the boards with 50 rebounds compared to 33 for Metro State. WSC had 28 offensive and 22 defensive caroms led by Schnitzler with seven. VanAuker had six boards while Olmsted, Chamberlin and Otjen had five caroms apiece.

WSC suffered 30 turnovers in the game while Metro State had 24. The winners blocked seven WSC shot attempts.



**WE SUPPORT ALLEN  
GIRLS BASKETBALL**  
VILLAGE INN  
ALLEN OIL CO.  
FARMERS COOP ELEVATOR CO.  
CHASE PLUMBING  
WAYNE HERALD & MARKETER  
NORTHEAST NEBRASKA ROCKET



Heather Sachau pulls up for a jumper against Winside in the season opener Thursday.



## ALLEN GIRLS BASKETBALL

MEMBERS OF THE ALLEN girls basketball team this season include from back row left to right: Debbie Plueger, Tanya Plueger, Jamie Mitchell, Holly Blair, Shelly Smith, Brandi Blohm, student manager Kelli Smith. Middle row: Coach Lori Koester, Stephanie Martinson, Steph Chase, Dawn Diediker, manager Bobbi Stingley, manager Megan Kumm, coach Gary Erwin. Front row: Sonya Plueger, Marcia Hansen, Cindy Chase, Denise Boyle, Heather Sachau, Christy Philbrick. Not pictured is Mandy Oldenkamp.



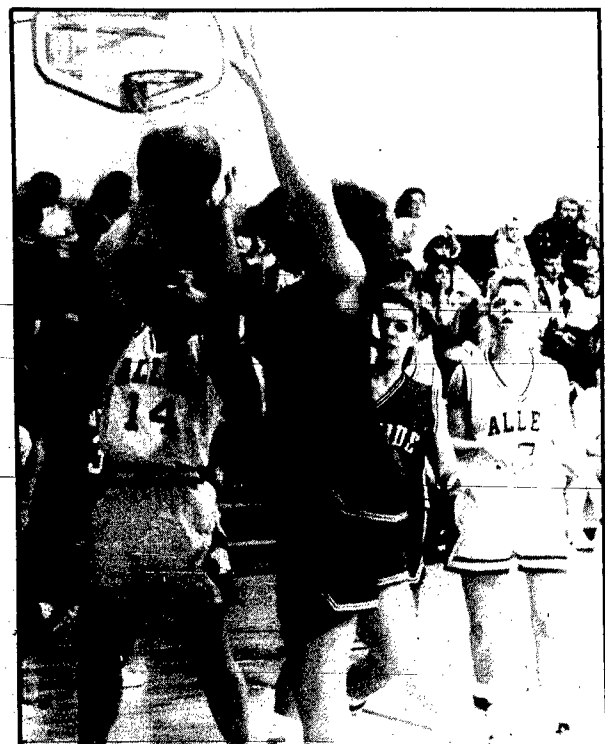
## ALLEN BOYS BASKETBALL

MEMBERS OF THE ALLEN boys basketball team this season include from back row left to right: Brian Nelson, Jason Reuter, Brad Greenough, Curtis Oswald, Casey Schroeder, Mike Sullivan. Middle row: Brian Webb, Craig Philbrick, Davis Miner, Jay Jackson, Sean Moran, Jeff Geiger. Front row: Asst. coach Dave Wamberg, Chris Sachau, Lane Anderson, Tim Fertig, head coach Jeff Schoning.

**WE SUPPORT ALLEN  
BOYS BASKETBALL**  
VILLAGE INN  
ALLEN OIL CO.  
FARMERS COOP ELEVATOR CO.  
CHASE PLUMBING  
WAYNE HERALD & MARKETER  
NORTHEAST NEBRASKA ROCKET



Jay Jackson, Chris Sachau and another Allen player surround a Winside shooter.



ALLEN POINT GUARD Christy Philbrick runs up against Winside's Wendy Rabe during second half action of Allen's win over the Wildcats. Cindy Chase and Holly Holdorf look on from behind.

# Allen earns sweep of Winside in season openers Thursday

The Allen Eagles and Winside Wildcats girls and boys basketball teams clashed in season openers for all Thursday night in Allen and it was the home team prevailing in both contests but both games went down to the wire before the winners were decided.

In the girls varsity contest Allen won 36-32 as Cindy Chase led the way with 10 points. The Eagles needed just five seconds to score the first points of the year while Winside went 6:05 before they broke into the scoring column.

Allen led 12-4 after one but Winside chiseled the lead to five by intermission at 20-15. The Eagles held a slim 28-26 lead after three quarters of play and in the fourth quarter the lead changed hands several times before Allen broke a 32-32 for good following a steal and a lay-up.

"Our defense won the game for us," Allen coach Lori Koester said. "Denise Boyle did a great job of denying the pass to Winside's Wendy Rabe which really helped us."

Koester's biggest concern after the game was all of the turnovers her team suffered on several three-second violations. "We have to cut down on our turnovers if we want to continue having success,"

Koester said. "Overall though I was pleased with our girls effort. They really played hard."

Heather Sachau added eight points for the winners while Christy Philbrick and Boyle had six apiece. Marcia Hansen, Steph Martinson and Sonya Plueger scored two each.

Rabe led Winside with 18 points while Christi Mundil scored six. Holly Holdorf and Kari Pichler each scored four. Winside won the battle of the boards, 32-28 as Rabe hauled down seven caroms while Jenny Jacobsen and Holdorf had seven each.

Boyle led Allen on the boards with nine while Sachau, Martinson and Plueger had four apiece. Winside suffered 24 turnovers to 18 for Allen and the visitors were just 4-12 from the foul line while Allen was a perfect 4-4.

"To be honest I am rather pleased with our performance," Winside coach Paul Giesselmann said. "We played well on defense and our offense was a little ragged but that was to be expected since we haven't had much practice time due to the state volleyball tournament."

Allen boys win by three  
In the nightcap it was another close game as Allen hung on to

down a stubborn Winside team 65-62. The Wildcats began a new era of basketball under the reign of Shannon Pospisil who replaced Randy Geler at the helm.

The score was tied at 12 after the first quarter but Allen led 34-30 at the break as Jeff Schoning's team took advantage of several Winside turnovers. Winside trailed 49-37 at one point in the third quarter but the Wildcats outscored Allen 11-0 to close out the third period to cut the Eagles lead to one at 49-48.

The lead changed hands repeatedly in the fourth quarter before Allen broke a 60-60 tie to lead for good. Winside had chances to either tie or go ahead of the Eagles but was unsuccessful.

"I thought we did a nice job of hustling and we worked hard on our press," Schoning said. "We got wore down a little bit on the boards but we hung tough and got the win. We have a very young team with our top three scorers being sophomores."

Casey Schroeder led the Eagles with 16 points including five, 3-pointers while Jay Jackson scored 14. Curtis Oswald had 12 points and Jason Reuter had six on two, 3-pointers. Chris Sachau and Tim Fertig each had six points and

Brian Nelson had three on a 3-pointer. Lane Anderson rounded out the scoring attack with two.

"I felt coming into the game that if we didn't hurt ourselves with turnovers that we would win this game," Pospisil said. "We finished the game with 27 turnovers compared to 12 for Allen and that's what cost us the game."

Pospisil felt his squad played well. "Our kids were in a situation with the game being tied at 60-60 with very little time remaining, that they haven't been used too," Pospisil said. "I have a positive feeling and so does the team that we are going to win some games this year and be competitive in all of our contests. We just have to cut down on turnovers."

Winside had balanced attack with Cory Miller leading the way with 18 points including four, 3-pointers. Cory Jensen had 14 points with two, 3-pointers and Jason Paulsen finished with 12. John Hancock netted 10 and Cam Shelton scored eight.

Winside won the battle of the boards 46-39 as Shelton led the way with 15 caroms. Miller hauled down 11 boards and Jensen, eight. Oswald and Sachau led Allen in rebounding with six caroms apiece.





### Youth Community Calendar

**MONDAY, DECEMBER 9**  
 3rd Grade Cub Scouts, Masonic Lodge  
 7th-8th grade girls basketball, Away, West Point. C.C.  
 9th grade boys basketball, Away, Randolph  
 Carroll Christmas program, 7:30 p.m.  
 Junior Girl Scouts, Redeemer Church, 7 p.m.  
 Cadet Girl Scouts, Methodist Church, 7 p.m.  
 Junior Fire Patrol for 5th graders, Wayne Fire Hall, 7 p.m.  
 Boys Scouts' parent meeting, St. Paul's Church, 7 p.m.

**TUESDAY, DECEMBER 10**  
 2nd Grade Cub Scout Wolves, Methodist Church  
 Exchange student reception in High School Commons  
 7th-8th grade boys basketball, Home in City Auditorium, West Point C. C.  
 Varsity Wrestling, Home, West Point, 7 p.m.  
 School Board meeting, High School, 7:30 p.m.  
 9th grade boys basketball, Away, Randolph, 7:30 p.m.

**WEDNESDAY, DECEMBER 11**  
 Varsity wrestling, Away, Wisner Invitational, 10:15 a.m.  
 Awana Club for K-6th Grade, National Guard Armory, 6:45 p.m.

**THURSDAY, DECEMBER 12**  
 7th-8th grade girls basketball, Home, Hartington, 4 p.m.  
 Junior High wrestling, Home, Schuyler, 5:45 p.m.  
 9th grade boys basketball, Away, Laurel, 6:15 p.m.  
 Junior Varsity and Varsity girls basketball, Away, Battle Creek, 6:30 p.m.  
 4th grade Webelo Cub Scouts, 1015 Poplar St., 7 p.m.  
 Middle School Choir Christmas Concert, Lecture Hall, 7:30 p.m.

**FRIDAY, DECEMBER 13**  
 National Geography Bee  
 High School Band and Choir Christmas Concert, Lecture Hall, 7:30 p.m.

**SATURDAY, DECEMBER 14**  
 ACT testing  
 Cub Scout popcorn deliveries  
 7th-8th grade boys basketball, Wayne Invitational  
 Varsity wrestling, Away, West Point, 10 a.m.  
 9th grade boys basketball, Away, Columbus Lakeview, 5 p.m.  
 Junior varsity boys basketball, Away, Columbus Lakeview, 7:30 p.m.  
 Varsity basketball, Home, Battle Creek, 7:30 p.m.

**SATURDAY- MONDAY, DECEMBER 14-16**  
 7th-8th grade girls and boys basketball, Home, Wayne Invitational, City Auditorium and High School

**MONDAY, DECEMBER 16**  
 1st, 2nd and 3rd Grade Brownies, Methodist Church, 6:30 p.m.  
 Junior Girl Scouts, Redeemer Church, 7 p.m.  
 Boy Scouts' Christmas party, St. Paul's Church, 7 p.m.  
 5th Grade Webelo Cub Scouts, Wayne Fire Hall, 7 p.m.

For any corrections or additions to this listing, please contact Imogene at 375-4998 (home) or 375-3455 (work) and leave a message. Deadline is Thursday noon. Each calendar will include a schedule of events for the next week.

## Wayne team heads to state

Wayne High School drama students took first place honors at the district one-act play competition held at Silver Creek Thursday.

Wayne is one of eight schools in Class B to qualify for the state competition to be held next Saturday in Grand Island. Wayne's play "Jacque, or Obedience" won perfect scores from the judges and received raves for acting, costuming and set.

Individual honors went to Wayne students Davin Flatmoe, Kerry McCue and Staci Frank for superior acting.

Other schools participating in the district competition included: Columbus Scotus, runner-up; David City Aquinas, Columbus Lakeview, West Point, Logan View and Schuyler.



WAYNE HIGH SCHOOL ONE-ACT PLAY cast member Kerry McCue does a make-up job on fellow cast member J.D. O'Leary.

## Habitat changes may affect birds

Although more information needs to be gathered, preliminary data indicate that some Midwestern songbirds are declining, possibly because of habitat changes here, said a University of Nebraska-Lincoln wildlife ecologist.

Julie Savidge, an assistant professor in the Department of Forestry, Fisheries and Wildlife, said the problem originally was thought to stem from destruction of Latin American forests where many Midwestern birds winter. But new evidence indicates much of the cause lies at home.

"It appears to be a problem for both prairie and forest birds," Savidge said. "We don't completely know why yet, but the evidence is beginning to come in."

She said the suspected Midwestern decline parallels a better-documented decline of eastern forest species and the reasons probably are similar. In the east, fragmentation of forests by roads, urbanization and other development has turned large forests into collections of smaller remnant stands, Savidge explained. While the remaining stands still offer some nesting habitat, breeding success in small stands is much lower, she said.

That's because of the "edge effect," the Institute of Agriculture and Natural Resources ecologist said. The edge effect occurs where two or more types of habitat, such as grassland and forest, meet, she explained. Wildlife biologists have long recognized that edges are the most productive areas for many species because of the mix of habitats. However, that increased activity can spell disaster for species that require the security of large, unbroken blocks of habitat, she said.

Early data from several Midwestern states indicate that both prairie and forest birds suffer higher rates of nest predation and nest parasitism when they attempt to nest near an edge, she said. Nest predation is the result of small predators, such as raccoons, crows, bluejays feeding on eggs or young birds. So-called "nest parasites" include brown-headed cowbirds, which lay their eggs in other species' nests to be hatched and fed by the adoptive parents at the expense of their own brood, Savidge said.

"When you have small fragments of habitat, you have almost all edge," she said.

Usual bird census techniques

don't measure breeding success, Savidge said. Such techniques may even falsely indicate abundance while breeding languishes. For example, census takers may find a forest fragment filled with singing birds. But on closer inspection these may turn out to be unpaired males. They are unable to mate because females are concentrated in prime nesting areas near the centers of remaining habitat, she explained.

Savidge is a member of the research committee of the Midwest Working Group for Neotropical Migratory Bird Conservation. The group was recently formed to address the decline of these birds which include many familiar songbirds. She also is part of a regional group investigating the effect of Conservation Reserve Program (CRP) grasslands on bird numbers, she said.

CRP grassland were planted within the last several years under a program to protect highly erodible cropland. However, many of the plantings are less than 100 acres, possibly below the minimum size for high breeding success, she said.

"We see lots of birds when we walk through a CRP area," Savidge said. "There's no question they are serving as habitat for both game and non-game birds. Generally, grasslands are beneficial for wildlife in an agricultural area. But we don't yet know how successful birds are in these smaller areas."

Preliminary data on local bird populations have a number of implications for wildlife habitat management, Savidge said. While large blocks of habitat are nearly nonexistent in agricultural areas, landowners can help by providing grassland in roadsides, waterways and odd, unfarmable areas. While small, such areas will help both under the theory that some habitat is better than none, and by providing corridors tying together other grasslands in the area, she said.

On the other hand, landowners in western areas such as the Sandhills, where rangelands still provide large expanses of grassland habitat, may want to forgo installation of shelterbelts and other tree planting within large blocks of grassland if maintaining prairie bird habitat is a concern, she said.

## Wayne man reports yield of 138.39 bushels per acre

A yield of 138.39 bushels, No. 2 corn per acre from Crow's 488, a mid season hybrid, has been submitted by Neyron Woodward of Wayne as an entry in Crow's 1991 CornMaster Yield Contest.

The CornMaster Contest, which is sponsored each year by Crow's Hybrid Corn Co., gives corn growers the opportunity to compete for cash prizes, trophies and recognition for outstanding yields.

The contest also provides entrants with a program in which

they can exchange corn management ideas and practices for the purpose of improving profits.

Contest entrants and other guests of Crow's are invited to the annual special awards banquet held in January. Approximately 3,000 farmers attend the CornMaster program each year.

Neyron said in his report to Crow's that his entry was harvested on Oct. 10, 1991 from a final stand of 17,000 plants per acre at a harvest moisture of 15.8 percent.

**FARMERS! CHECK WITH US FOR YOUR FALL FERTILIZER NEEDS.**

**GOOD THINGS FOR THE LAND**  
 Terra International, Inc.  
 Wakefield and Wayne, Nebraska  
 375-3510  
 BLOCKBUSTER BOWL ALABAMA VS COLORADO

For all your sportswear and sporting needs!

**WAYNE SPORTING GOODS**

219 Main Street  
 Wayne, Nebraska  
 Phone 375-3577

FIESTA DEL VALLEY TENNIS CENTER

It Pays To Compare Coverage & Rates

**NORTHEAST NEBRASKA INSURANCE AGENCY**

111 West 3rd Wayne Phone 375-2696

Auto-Home-Health-Life-Motorcycles

ROBE WASHINGTON VS MICHIGAN

**EL TORO**

FINE FOOD & SPIRITS  
 611 NORTH VALLEY DRIVE  
 WAYNE, AMERICA 375-2636

FLORIDA VS MOTTIE DAME

ORANGE NEBRASKA VS MIAMI

**STOP IN AND REGISTER FOR A NEW CAR**

**PAC 'N' SAVE**

DISCOUNT SUPERMARKETS  
 HOME OWNED & OPERATED  
 WEST HWY 35 WAYNE 375-1202  
 Mon. - Sat. 7:30 - 10 Sun. 8 - 8

### THE WAYNE HERALD FOOTBALL CONTEST

**FIRST PLACE — \$15.00 — IN FOOTBALL BUCKS**

**SECOND PLACE — \$5.00 — IN FOOTBALL BUCKS**

**CONTEST RULES:** One football game has been placed in each of the ads on this page. Indicate the winner by writing in the name of the winning team on the proper line on the entry blank. No scores. Just pick the winners, or ties. In case of a tie, write "tie." Use the entry blank below or a copy of equal size. Write in your guess of the score for both teams. This will only be used in case of a tie. The person that comes closest to the score will be the winner. One entry only to each contestant, but members of a family may each submit an entry. Entries should be brought or mailed to The Wayne Herald office not later than 5 p.m., Friday, or if mailed, should not be postmarked later than 5 p.m. Friday. You need not be a subscriber of the Herald to be eligible for prizes. The winners will be announced weekly on the Thursday sports page of The Wayne Herald. Employees of the Herald and their immediate families are ineligible. Judges' decisions will be final in every case.

- |                              |                                 |
|------------------------------|---------------------------------|
| <b>TERRA INTERNATIONAL</b>   | <b>KTCH</b>                     |
| <b>WAYNE SPORTING GOODS</b>  | <b>SAV-MOR PHARMACY</b>         |
| <b>NE NEBRASKA INSURANCE</b> | <b>LOGAN VALLEY IMP.</b>        |
| <b>EL TORO</b>               | <b>DIERS SUPPLY</b>             |
| <b>HARDEE'S</b>              | <b>RAINTREE DRIVE-IN LIQUOR</b> |
| <b>JONES INTERCABLE</b>      | <b>FREDRICKSON OIL CO.</b>      |
|                              | <b>PAC 'N' SAVE</b>             |

NAME \_\_\_\_\_

ADDRESS \_\_\_\_\_

CITY \_\_\_\_\_ STATE \_\_\_\_\_ ZIP \_\_\_\_\_ PHONE \_\_\_\_\_

**DEADLINE FOR ENTRIES — FRIDAY, DECEMBER 20TH, AT 5:00 PM**

**TIE BREAKER - PICK THE AP TOP THREE TEAMS IN ORDER FOLLOWING ALL OF THE BOWLS.**

**FREDRICKSON OIL COMPANY & CONVENIENCE STORE**

ROUTE 2 HWY 15 NORTH  
 WAYNE PHONE 375-3535  
 TOLL FREE 800-672-3313

GATOR BOWL VA VS OKLAHOMA

**Hardee's**

All kinds of good stuff.™  
 602 Main Street Wayne, NE

**FASTEST, FRIENDLIEST SERVICE**

COTTON FLORIDA VS TEXAS A&M

ALOHA STANFORD VS GEORGIA TECH

**JONES INTERCABLE**

120 WEST THIRD 375-1120  
 WAYNE, NEBRASKA

**RAINTREE DRIVE-IN LIQUOR**

421 MAIN STREET WAYNE, NE.  
 TELEPHONE: 375-2090

HOLIDAY BOWL IOWA VS IYU

**BUSCH & BUSCH LIGHT 12 PK CANS \$5.00**

**THE BEST THING ABOUT BAD WEATHER**

TRS21 Walk-Behind Snow Thrower \$469.00

CITRUS BOWL CLEMSON VS CALIFORNIA

TRS22 Walk-Behind Snow Blower \$1,349.00

Ask about our 30-DAY NO RISK RETURN POLICY.

\$859.00 Low, Low Prices!

Nothing Runs Like a Deere

**LOGAN VALLEY IMPLEMENT**

EAST HWY. 35 WAYNE, NEBRASKA 68787 WATTS LINE 1-800-343-3309 PH: 375-3323

INDEPENDENCE BOWL GEORGIA VS ARKANSAS

**105 FM 1590 AM**

**LAWN MOWERS 20% OFF**

**LAWN BOY MOWERS 15% OFF**

**DIERS SUPPLY**

614 NORTH VALLEY DRIVE  
 WAYNE, NEBRASKA 68787  
 TELEPHONE: 375-2303

JOHN HANCOCK UCLA VS ILLINOIS

HALL OF FAME OHIO ST VS SYRACUSE

**EVERY DAY OF THE WEEK DOUBLE PRINT PHOTO PROCESSING SPECIAL**

|                             |        |
|-----------------------------|--------|
| 24 PRINTS/12 EXP. ROLL..... | \$2.67 |
| 30 PRINTS/15 EXP. DISC..... | \$3.57 |
| 48 PRINTS/24 EXP. ROLL..... | \$4.97 |
| 72 PRINTS/36 EXP. ROLL..... | \$6.97 |

C-41 PROCESS ONLY  
 GOOD ON DEVELOP AND PRINT PHOTO PROCESSING ORDERS.

**Sav-Mor Pharmacy** 1022 Main St. Wayne, NE 68787 (402) 375-1444

# Public comment sought on state housing plan

Wayne Public Library has received a draft copy of "Nebraska's Comprehensive Housing Affordability Strategy (CHAS)." This is a five-year plan to increase affordable housing in the state.

The CHAS will assist the state in addressing the increasing demand for affordable housing around the state and has been required in recent federal legislation through the National Affordable Housing Act of 1990.

The new housing act also provides new federal dollars for affordable housing. Two of the major programs, called HOPE and HOME, will provide monies to encourage more home ownership and increase the assistance available to cities and states to produce more affordable housing.

The CHAS proposes strategies for the state to effectively use these new financial resources.

The HOPE program, Homeownership and Opportunity for People Everywhere, will provide grants to public agencies and non-profit groups who can help lower

income people become homeowners.

Under the HOME program, funds for various activities have been authorized for states and cities to assist with producing more affordable housing.

The HOME program is a housing block grant program which will bring an additional \$6 million for the state, and Lincoln and Omaha for affordable housing programs or to assist the homeless.

THE DRAFT CHAS has been sent to over 280 Nebraska libraries, state senators, and the interest groups that helped prepare the document.

A 60-day comment period allows the public to provide input and additional strategies for the state to review prior to submitting the final CHAS to HUD and the state Legislature in January 1992.

Nebraska's CHAS will be updated annually to reflect the continued input of interest groups as well as that of all citizens who will benefit most with more decent, safe and affordable housing.



Photography: Bob Porter

## In concert

THE WAYNE HIGH SCHOOL BAND, under the direction of Brad Weber, recently gave a performance at Ramsey Theatre on the Wayne State College Campus. The band will be performing again this week when the Wayne High School choir and band hold a joint concert today (Monday). Performance time is 7:30 p.m. in the Wayne High lecture hall.



Photography: Mark Crist

## Plaque of recognition

DURING FRIDAY'S WAYNE AREA CHAMBER OF COMMERCE weekly coffee, Jane and her husband, Jay O'Leary, received a plaque from Ken Berglund on behalf of the Wayne Ambassadors. O'Leary was given the plaque for being an outstanding ambassador for her work in promoting the Wayne community through the Wayne Arts Council and the Wayne Chicken Show Committee.

## Satellite brings class

Thanks to new technology, university-level agricultural marketing information will be beamed into farm homes and even small-town coffee shops beginning Jan. 13, announced University of Nebraska-Lincoln officials.

The course, "Agricultural Marketing and Entrepreneurship, Professional Problems in Agricultural Management," is available to students as a for-credit class, but Instructor James Kendrick said organizers expect to reach potentially vast numbers of farmers, ranchers, agricultural consultants, lenders and agribusiness people through the broadcasts over the AG\*SAT educational network.

Kendrick said course content will be similar to his traditional Agricultural Economics 211 class and will cover topics such as hedging techniques, price theory, marketing channels, firm management, foreign trade and marketing policy. Lectures will be as timely as the morning news, because Kendrick incorporates the day's price movements and other worldwide developments into the content.

The lectures will be broadcast from 9-9:50 a.m. Central Time on Mondays, Wednesdays and Fridays from Jan. 13 through May 2. More information is available from local Cooperative Extension offices. Satellite coordinates will be available after Jan. 1 by calling 1-800-755-7765 toll free.

## 4-H News

### BLUE RIBBON WINNERS

Sixteen members and 14 parents attended the Dec. 2 meeting of the Blue Ribbon Winners 4-H Club at the Carroll Elementary School. Seven new members were introduced. The club now has a total of 27 members.

President Trevor Topp conducted the business meeting. Enrollment sheets for 1992 were completed.

Election of 1992 officers was held. New officers are Doug French, president; Trevor Topp, vice president; Melinda Mohr, sec-

retary; Joshua Jaeger, treasurer; and Crystal Jaeger, news reporter.

Ken Hall was re-elected club leader. Other leaders are John Williams, beef; Dean Mann, swine; Mark Tietz, sheep; Dave Jaeger, dairy; Gordon Mohr, horse; David Owens, small animals; Dianne Jaeger, photography and crafts; and Joni Jaeger, home economics.

The Ken and Deb Hall family hosted the meeting. The next meeting is tentatively set for Jan. 27 with the John William and Darrell French families hosting. Club dues will be collected.

## SOCIAL SERVICE WORKER

Position opening for a full time Social Service Worker in a community-based mental retardation program in Oakland, Neb. BA degree in social work, mental retardation, psychology or other related field. Salary is \$15,193.36 per year. Valid Nebraska driver's license, subject to Region IV's Policy Concerning Employee Driving Records.

Send letter of application and resume to: Joni Langemeier, Social Service Supervisor, Region IV Office of Developmental Disabilities, P.O. Box 330, Wayne, NE 68787-0330. Closing date is December 15, 1991.

# Holiday Full Meal Deal™



Now you can deck your halls with a collectible holiday glass and get a juicy Homestyle® Single Burger, hot crisp fries, soft drink, and a delicious, I-love-this-taste sundae... all at one great price. Start your collection now. Just ask for the Holiday Full Meal Deal!™ At Participating Dairy Queen® Brazier® Stores.

We Treat You Right® **brazier**

Dairy Queen® stores are proud sponsors of the Children's Miracle Network® Telethon, which benefits local hospitals for children.

© AM D.Q. Corp./1991 TM Trademark AM D.Q. Corp. © Reg. U.S. Pat. Off., AM D.Q. Corp.

MONDAY—TUESDAY—WEDNESDAY EVENINGS

**SHRIMP and SCALLOP Linguini**  
SUPERB PASTA PLATE: Includes soup du jour, variety salad, combination plate, garlic bread. ONLY **\$6.95**

UNMATCHED QUALITY — UNIQUE FLAVOR

**THE UPTOWN**  
EATING ESTABLISHMENT

**GIFT Certificates**

371-7171 • 326 NORFOLK AVE.  
NORFOLK, NEBRASKA

WAYNE-CARROLL HIGH SCHOOL — WINSIDE HIGH SCHOOL

## STUDENTS OF THE MONTH

We are proud to be a part of these Communities and recognize these students as our area's Number 1 resource.

farmers & merchants state bank of Wayne  
321 MAIN STREET - P.O. BOX 249  
WAYNE, NEBRASKA 68787  
402-375-2043

**Wayne's Newest Banking Partner**

THE BANK WHERE YOU'RE SOMEBODY SPECIAL™

321 Main Street 375-2043

### SAMANTHA THOMPSON

Samantha is the daughter of Larry and Pat Thompson. She is a Junior at Wayne High School and will graduate with the class of 1993. She has earned several academic honors to date. These include: Straight A Honor Roll, 2-year Kiwanis Honor Student, and Academic Letter Winner. Samantha is a member of Spanish Club and active in Varsity Choir where she also sings in the triple trio and jazz choir. Samantha has attended a Biology Camp at UNO and plans to enter a science related field of study at the post secondary level.

WAYNE'S ENTERTAINMENT CONNECTION

**JONES INTERCABLE**

120 WEST 3RD  
WAYNE, NE.  
375-1120

**FIRST NATIONAL INSURANCE AGENCY**

**GARY BOEHLE & STEVE MUIR**  
Phone: 375-2511  
Wayne, Nebraska

### HOLLY HOLDORF

Holly is the daughter of Randy and Joni Holdorf of RR Carroll. She is a Junior at Winside High School. Holly has been a cheerleader for three years. She participates in choir and band. Holly is active in sports at Winside. She serves as a track team manager and participates in volleyball and basketball. Holly has been named to the Lewis & Clark All Conference Volleyball Team, 1991-92, and also to The Wayne Herald All Area Team, 1991-92. Holly is an honor student. Her favorite subject in school is Spanish. Her hobbies include playing the piano, playing sports, and playing the drums, trumpet and flute. After graduation from high school Holly would like to pursue a career as a doctor.

## FARMER'S CO-OP

• FEED • FERTILIZER  
• FUEL • CHEMICALS

See us for all your needs!

**PILGER**  
**396-3414**  
**WINSIDE**  
**286-4277**



**Winside News**

**Dianne Jaeger**  
286-4504

**LIBRARY BOARD**

All members were present for the Dec. 2 meeting of the Winside Library Board. President Kim Sok conducted the meeting. The secretary's report was given.

Items loaned in November totaled 343 which included more adult materials than children's. The personnel and service policy was distributed. Old and duplicate books were removed from the library shelves and will be sold Saturday, Dec. 7 at the craft show.

A video on radon has been received as well as three tapes from the Retirement Foundation on Aging.

New library hours are Monday, 1-6 p.m.; Wednesday, 1:30-6:30 p.m.; and Saturday, 9 a.m. - 12 noon and 1-3 p.m.

Next meeting will be Monday, Jan. 6 at 7:30 p.m.

**AMERICAN LEGION**

Adjutant Bob Jensen conducted the Tuesday Roy Reed American Legion Post 252 meeting with six members present. The secretary's and treasurer's reports were given.

A soup supper will be held by the Legion Friday, Jan. 17 in the elementary school from 4-9 p.m. Next regular meeting will be Tuesday, Jan. 7 in the Legion Hall at 8 p.m.

**TOPS**

Members of TOPS NE 589 met Wednesday for weigh-in. A Christmas letter and poem was read from the TOPS state president.

During the holidays, weigh-ins will be any time on Monday, Dec. 23 and 30. Next meeting will be Wednesday, Dec. 11 at Marian Versen's at 6 p.m. Anyone wanting more information can call 286-4425 or Kris Marotz at 286-4207.

**WEBELOS**

Webelo Cub Scouts met Tuesday with Leader Joni Jaeger and worked on prints for their boy scout badge and the 12 points of boy scout law. They also did some exercises. Jeremy Jaeger became the new patrol leader and took attendance and dues. Zeke Brummels served treats. Next meeting will be Tuesday, Dec. 10 with Jeremy Jaeger bringing treats.

**SENIORS**

Twenty-one Winside area senior citizens met Dec. 2 in the Legion Hall. A Christmas sing-a-long furnished entertainment followed by cards.

A special cake was served for Barb Leapley's birthday. Hostesses were Marie Herrmann and Charlotte Wylie. A Christmas carry-in dinner will be held Monday, Dec. 16 at noon and will be the last meeting until January.

Next meeting will be Monday, Dec. 9 in the Legion Hall at 2 p.m. All area seniors are invited to attend.

**SCHOOL CALENDAR**

Monday Dec. 9: Kindergarten-6th grade Christmas program, 7:30 p.m.; Board of Education meeting, 9 p.m.

Tuesday, Dec. 10: Basketball, Home, Laurel, girls varsity, 6:15 p.m. and boys varsity, 8 p.m.

Thursday, Dec. 12: Basketball, Away, Newcastle, girls, 6:15 p.m.; Wrestling, Home, West Point and Pender, 6:30 p.m.

Saturday, Dec. 14: State One-Act Play Contests, Grand Island; Wrestling, North Bend Tourney, 10 a.m.

**Former Concord official gets award**

Four University of Nebraska faculty members received awards here Sunday evening at the annual banquet for the Nebraska Chapter of Gamma Sigma Delta, honor society for agriculture.

The award of merit recipient was Robert Fritschen, director of the NU Panhandle Research and Extension Center in Scottsbluff. The society also recognized Institute of Agriculture and Natural Resources faculty members for excellence in teaching, extension and research.

Fritschen has been center director since 1979. He also served as swine specialist at the Northeast Research and Extension Center near Concord, and was an extension agent in Scotts Bluff and Dawes counties. His research includes work in swine nutrition and the design of open-front confinement buildings widely used in the swine industry.

As an administrator, Fritschen oversees 23 faculty members representing 13 UNL departments, and local extension work in the

Panhandle counties. He is a winner of numerous previous awards. Fritschen earned his bachelor and master of science degrees at South Dakota State University.

The excellence in teaching award went to UNL Professor of Animal Science James Kinder, who is noted for the popularity of his classes despite their reputation for difficulty. A disciple of traditional teaching methods, Kinder uses only essay questions on his tests to encourage students to deeper, more independent thought.

He also encourages the development of communications skills through the use of oral exams, and term papers with oral defense.

The excellence in extension award in extension was presented to Loyd Young, director of the NU Southeast Research and Extension Center in Lincoln. Young was cited for taking extension programming in the district from a reactive to pro-active stance by creating and encouraging programs that address current issues and problems.

Young is also noted as an effective administrator of the Southeast District, which comprises 25 counties with 61 extension agents and 16 faculty members at the Lincoln headquarters. Under his leadership, both the headquarters and local offices have been provided with additional personnel, and upgraded facilities and equipment.

The excellence in research award went to Milford Hanna, director of the Industrial Agricultural Products Center at UNL. Holding a joint appointment in the Food Science and Technology and Biological Systems Engineering departments, Hanna's work is considered central to the development of UNL's food engineering program.

Hanna's research is noted for having both a strong theoretical base and practical applications. Among his more recent areas of study are food extrusion and biodegradable plastics.

**Carroll News**

**Kathy Hochstein**  
585-4729

**DAISY GIRL SCOUTS**

Daisy Scouts met Wednesday at the home of their leader, Pat Bethune. The afternoon was spent painting sweatshirts and making tree ornaments.

Next meeting will be Wednesday, Dec. 18 and the Daisy's are planning to join the Brownies for Christmas caroling at the Laurel Care Center on Saturday, Dec. 21.

Mr. and Mrs. Russell Hall were Thanksgiving guests of their children, Mr. and Mrs. Bruce Froendt in Houston, Texas. The Halls left Nov. 26 and returned home Dec. 3.

Guests Thursday in the LaVerle Hochstein home for Kami's 18th birthday were Mr. and Mrs. Steve Jorgensen, Alycia, Adam and Aaron of Wayne; Mr. and Mrs. George Jorgensen, Judy Milligan and Lee Pilger, all of Carroll.

**2ND ANNUAL CHRISTMAS AUCTION SATURDAY, DEC. 14TH**

**LISTEN FOR FURTHER DETAILS...**



**WIN A 2 MINUTE SHOPPING SPREE**

at Pac'N'Save

Drawing: Dec. 17, 8:00 p.m.

**SHOPPING SPREE**

Dec. 18, 8:00 p.m.

Limit \$30.00 in meat department & 2 of each food item only.

**1 CHANCE - \$1.00 6 CHANCES - \$5.00**

SPONSORED BY TAU KAPPA EPSILON FRATERNITY

Buy your tickets at Daylight Donuts

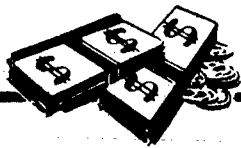
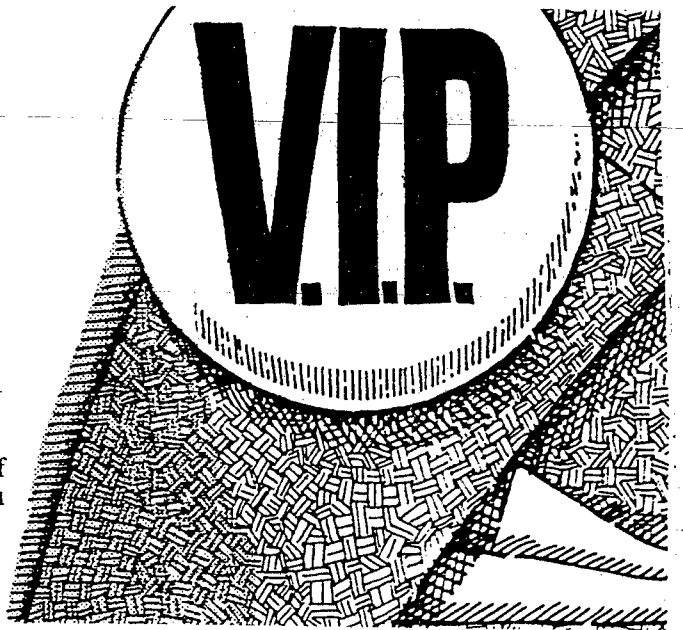


**GET THE V.I.P. TREATMENT (AT HOME)**

**VERY IMPORTANT PERSON** — That's the way you're treated when you shop with your hometown merchants. You can rely on their honesty and you know they stand behind the goods and services they sell.

Exchanges, if necessary, are much easier and you have the satisfaction of knowing that you are supporting your local community. Keep the dollars you spend working for all of us right here at home.

Shop at home and you'll be a **VERY INTELLIGENT PERSON** too!



**It Pays to Trade Where You Live**

- CHARLIE'S REFRIGERATION & APPLIANCE SALES & SERVICE**
- CARHART LUMBER CO.**
- DIAMOND CENTER**
- DIERS SUPPLY**
- DOESCHER APPLIANCE**
- ELLINGSON MOTORS**
- FIRST NATIONAL AGENCY**
- FIRST NATIONAL BANK MEMBER FDIC**
- FREDRICKSON OIL CO.**
- GODFATHER'S PIZZA**
- MEDICAP PHARMACY**

- KOPLIN AUTO SUPPLY**
- KTCH RADIO**
- MAGNUSON EYE CARE**
- MORRIS MACHINE & WELDING**
- NORTHEAST NEBRASKA INSURANCE AGENCY**
- OFFICE CONNECTION**
- PAC'N'SAVE**
- PAMIDA**
- TOM'S BODY & PAINT SHOP, INC.**
- SAV-MOR PHARMACY ACROSS FROM WAYNE STATE COLLEGE**

- SCHUMACHER MCBRIDE, WILTSE FUNERAL HOMES WAYNE-WINSIDE-CARROLL-LAUREL**
- STATE NATIONAL BANK MEMBER FDIC**
- SURBER'S CLOTHING FOR MEN & WOMEN**
- WAYNE AUTO PARTS**
- WAYNE CARE CENTRE**
- WAYNE COUNTY P.P.D.**
- WAYNE FINANCIAL SERVICES**
- WAYNE HERALD & MARKETER**
- WAYNE VISION CENTER**

## HELP WANTED

**Heritage**  
EMERSON  
CARE CENTER

**NOW TAKING APPLICATIONS**  
for the following positions:

- LPN or RN's evening and/or night shift.
- Nursing Assistant/Medication Aides.

**Qualifications include:**

- Ambitious, hard worker but one who likes to have fun working.
- Loving and caring person who enjoys working with the elderly.
- An individual to work within a team who has creative problem solving skills

**Benefits include:**

- Competitive wages
- Health Insurance/Benefit Bonus
- Vacation Time/Sick Time
- Education Advancement Available

"QUALITY CARE BY PEOPLE WHO DO"

P.O. BOX 310, SIXTH & NEBRASKA-EMERSON, NE 68733-(402)695-2683

**MINIBUS DRIVER POSITION**

The City of Wayne has an opening for a part-time minibus driver, 16 - 24 hours per week. Salary range: \$4.29 to \$6.31 per hour. Driver's license required. Applications should be directed to the Personnel Office, Municipal Building, 306 Pearl Street, Wayne, NE 68787. Deadline for applications will be December 20, 1991. The City of Wayne is an equal opportunity employer.

Dec 9/3

**NOTICE OF VACANCY**

**LIBRARY ASSISTANT II, U. S. Conn Library**

Hiring rate \$1069/month, plus benefits. Job description and application form are available by writing to the Administrative Services Office, Hahn 104, Wayne State College, Wayne, NE 68787 or by phoning 402/375-7485. Completed application form and letter of application are due in Hahn 104 by 5:00 p.m., Wednesday, December 11, 1991. Wayne State College is an Equal Opportunity/Affirmative Action Employer.

Nov26/3

**HELP WANTED:** Substitute teachers needed. Winnebago Public Schools is accepting applications for K-12 substitute teachers for short and long term assignments. \$60 per day. Must have current certificate. Interested applicants need to contact Superintendent, Winnebago Public Schools, Box KK, Winnebago, NE 68071 or phone (402)878-2224. Nov 25/4

**HELP WANTED:** Engineering Aides, full time employment. Apply at Nebraska Department of Roads, East Highway 35, Wayne, Nebraska. We are an equal opportunity employer. Dec 9/2

**FOR SALE**

FOR SALE: Three cute female brown dachshunds. Will have all shots and ready for a new home Dec. 17. A great Christmas gift. Call 375-2559 after 5 p.m. if

**FOR RENT**

FOR RENT: 2 bedroom apartment for rent in Winside. Phone 286-4522 or 286-4243. TF

**CLASSIFIED ADS HOTLINE**  
Call toll-free  
1-800-672-3418

## Legal Notices

Every government official or board that handles public moneys, should publish at regular intervals an accounting of it showing where and how each dollar is spent. We hold this to be a fundamental principle to democratic government.

**PUBLIC NOTICE**  
TO: All persons interested in Sidewalk Improvement District No. 91-1 of the City of Wayne, Nebraska

Notice is hereby given that a plat of Sidewalk Improvement District No. 91-1 of the City of Wayne, Nebraska, and the schedule of the proposed special assessments of the property within the district, as prepared by the Street Commissioner of the City, are on file in the office of the City Clerk. Real estate included in Sidewalk Improvement District No. 91-1 is as follows:

- The East and West sides of Pearl Street from 1st Street to 7th Street.
- The East and West sides of Lincoln Street from 2nd Street to 4th Street.
- The West side of Douglas Street from 2nd Street to 3rd Street.
- The East side of Sherman Street from 2nd Street to 7th Street, and the West side of Sherman Street from 1st Street to 7th Street.
- The North and South sides of West 3rd Street from Pearl Street to Sherman Street.
- The South side of 4th Street from Pearl Street to Lincoln Street.

You are further notified that the Mayor and City Council will sit as a Board of Equalization in the City Council Chambers at the Municipal Building in the City of Wayne, Nebraska, at 7:35 o'clock P. M. on the 17th day of December, 1991, to consider objections and to adjust and equalize the proposed assessments therefor. Any objector may appear in person or by representative and submit such additional information as he or she may desire.

**THE CITY OF WAYNE, NEBRASKA,**  
By Carol J. Brummond, CMC  
City Clerk  
(Publ. Dec. 5, 9 & 16)

**SECRETARIAL POSITION**

We're looking for a sharp person with excellent typing, spelling, grammar and organizational skills for full time position. Accounting skills a plus. No interviews without prior submission of resume. Send resume to:

**Midwest Land Co.**  
P.O. Box 132  
Wayne, NE 68787

**PERSONAL**

Single & Pregnant?  
You don't have to go it alone. We're here to help.

No fees/confidential counseling  
State wide - since 1893

Nebraska Children's Home Society  
Teri Wendel  
1901 Vicki Lane Suite 101  
Norfolk, NE 379-3378 10-4

**NOTICE OF INCORPORATION**  
The Articles of Incorporation were filed November 12, 1991 for WAYNE TITLE AND ESCROW COMPANY, INC., with the registered office at 910 Ivy Street, Stanton, Nebraska for the purpose of general abstracting business, searches, conduct the business of making and selling transcripts, issuing policies of title insurance and handling escrows of real and personal property transactions, and to do all and everything necessary to carry into effect all powers and purposes set forth in the Articles of Incorporation with 100 shares of the par value of \$100.00 per share, to be fully paid when issued, having perpetual existence commencing on November 7, 1991 and whose affairs are conducted by a Board of Directors and the usual corporate officers.

**WAYNE TITLE AND ESCROW COMPANY, INC.**  
(Publ. Dec. 9, 16 & 23)

**NOTICE OF MEETING**  
City of Wayne, Nebraska.  
Notice is hereby given that a meeting of the Mayor and Council of the City of Wayne, Nebraska will be held at 7:30 o'clock p.m. on December 10, 1991 at the regular meeting place of the Council, which meeting will be open to the public. An agenda for such meeting, kept continuously current is available for public inspection at the office of the City Clerk at the City Hall.

Carol Brummond, City Clerk  
(Publ. Dec. 9)

**NOTICE OF MEETING**  
Notice is hereby given that the Wayne Airport Authority will meet in regular session on Monday, December 9, 1991, at 7:00 p.m. in the airport office at the Wayne Municipal Airport. Said meeting is open to the public and the agenda is available at the office of the City Clerk and the airport office of the Wayne Municipal Airport.

Mitch Nissen, Chairman  
Wayne Airport Authority  
(Publ. Dec. 9)

**Deadline for all legal notices to be published by The Wayne Herald is as follows:**

- 5 p.m. Monday for Thursday's paper and
- 5 p.m. Thursday for Monday's paper.

**PRODUCTION WORKERS**

IBP, Inc. is currently accepting applications for Production Workers at its West Point, Nebraska, beef facility. Experience is desirable, but not required (training is provided). Successful applicants must have a good work history, and a strong willingness to work.

**WE OFFER:**

- \*Full time employment
- \*Starting rate at \$7.00 per hour with a .20¢ increase every 90 days up to a base of \$8.15/hour
- \*Quick Start - qualified employees can by-pass the progression and earn up to \$8.15/hour plus skill pay.
- \*Guarantee 40 hour work week
- \*Medical/Dental/Vision & Life Insurance Available
- \*Savings and Retirement
- \*Paid Holidays & Vacations
- \*Advancement Opportunities

If you're looking for full time, permanent employment and meet the criteria above then we're looking for hard working people just like you.

Apply in person at:  
**WEST POINT PLANT  
PERSONNEL OFFICE**  
Monday-Friday, 8:00 A.M.-4:00 P.M. EOE M/F

**ibp**  
West Point, NE 68788

## BUSINESS & PROFESSIONAL DIRECTORY

**ACCOUNTING**

**MAX KATHOL**  
Certified Public Accountant  
104 West 2nd  
Wayne, Nebraska  
375-4718

**REAL ESTATE**

\*Farm Sales \*Home Sales  
\*Farm Management

**MIDWEST**  
Land Co.  
206 Main-Wayne-375-3385

**CONSTRUCTION**

**OTTE**  
CONSTRUCTION COMPANY  
\*General Contractor  
\*Commercial \*Residential  
\*Farm \*Remodeling  
East Highway 35  
Wayne, NE 375-2180

**SERVICES**

**LUEDER'S G-MEN**  
REFUSE SERVICE  
RESIDENTIAL PICKUP  
\$11.00 a month  
FREE GRASS PICK UP  
FOR '92 MUST BE BAGGED  
New customers must sign up in the next few months.

**CALL CHRIS**  
375-3402  
Send Payments to Box 275  
Wayne, Nebraska 68787

**BUTLER** **NORTHEAST** **LESTER**

**NEBRASKA BUILDERS**  
Box 444, 219 Main Street  
Wakefield, NE 68784

Office: (402) 287-2687  
Home: (402) 375-1634

**FINANCIAL PLANNING**

**GEORGE PHELPS, CFP**  
**JENNIFER PHELPS, M.B.A.**  
416 Main Wayne 375-1848  
TOLL FREE 1-800-657-2123

**IDS**  
An American Express Company

**WHITE HORSE**  
SHOE REPAIR & GAS STATION  
502 MAIN ST.  
WAYNE

Latherwork  
Shoe Repair  
Men's & Women's  
Same Day Service  
Quality Work at Lowest Prices!

**INSURANCE**

Independent Agent  
**DEPENDABLE INSURANCE**  
for all your needs call:  
**375-2696**

**N.E. NEBRASKA INS. AGENCY**  
Wayne 111 West 3rd

**COLLECTIONS**  
\*BANKS \*MERCHANTS  
\*DOCTORS \*HOSPITALS  
RETURNED CHECKS  
ACCOUNTS

Action Credit Corporation  
Wayne, NE 68787  
(402) 375-4609

State National  
Insurance Agency

Let us protect & service your insurance needs.  
Mineshaft Mall - Wayne  
Marty Summerfield  
Work 375-4888 Home 375-1400

**HEIKES**  
AUTOMOTIVE SERVICE  
\*Major & Minor Repairs  
\*Automatic Trans. Repair  
\*Radiator Repairs  
\*24 Hour Wrecker Service  
\*Goodyear Tires

419 Main Street Wayne  
PHONE: 375-4385

**KEITH JECH**  
INSURANCE AGENCY

IF THINGS GO WRONG!  
INSURANCE CAN HELP!

316 Main 375-1429 Wayne

**MITCHELL ELECTRIC**  
WAYNE  
375-3566

**FIRST NATIONAL AGENCY**

Gary Boehle  
Steve Muir  
303 MAIN  
WAYNE  
PHONE: 375-2511

**PRINTING**  
You name it—we print it!  
**THE WAYNE HERALD**  
375-2600  
1-800-672-3418

**PLUMBING**

For all your plumbing needs contact:  
**JIM SPETHMAN**  
375-4499

**SPETHMAN PLUMBING**  
WAYNE, NEBRASKA

**FAX**  
Fast & Economical.  
Send or receive documents anywhere in the world - in just seconds!

**THE WAYNE HERALD**

EMERGENCY.....911  
POLICE.....375-2626  
FIRE.....CALL 375-1122  
HOSPITAL.....375-3800

**RNs/LPNs**  
IMMEDIATE OPENINGS

- \*Pediatric Home care in Concord, Wayne & Stanton
- \*Full time nights
- \*Part-time days
- \*Paid orientation, excellent salary — RNs to \$16.00/hr. LPNs to \$10.00/hr.

Call for information:  
Sue Shannon, RN, or Sue Stoolman, RN.

**1-800-888-4933**  
Kimberly Quality Care — Omaha, NE

**NURSING ASSISTANTS**

Wisner Manor is searching for part-time and full time nursing assistants. We offer competitive wages, benefits package, flexible hours and educational assistance. Contact Ken at Wisner Manor, 1105 North 9th Street, Wisner, NE (402)529-3286. NOV25/4

## HEALTH CARE DIRECTORY


**Providence Medical Center**  
1200 PROVIDENCE ROAD • WAYNE, NEBRASKA 68787

To serve you better the following Out-Patient Clinics, Services and/or Mobile Services are available at the Providence Medical Center in Wayne. For more information contact your local physician or Providence Medical Center (375-3800). Ask for either Louise Jennes, Joan West or Marcie Thomas.

OB/GYN Clinic — Raymond Schulte MD, Omaha  
ORTHOPEDIC/SPORTS MEDICINE CLINIC — (NEW) Ronald Neumann MD, Omaha David Brown, MD, Omaha  
ORTHOPEDIC CLINIC — David Meyer, Kearney  
UROLOGY CLINIC — Cecil T. Bromfield MD, Lincoln  
EARS/NOSE/THROAT CLINIC — Thomas J. Teigt MD, Lincoln  
CARDIOLOGY CLINIC — J. T. Baller MD, Sioux City  
Allan Manalan MD, Sioux City Diane Werth MD, Sioux City  
William Warner MD, Sioux City  
David Zuehlke MD, Sioux City  
Steve Zumbun MD, Sioux City  
GASTROENTEROLOGY CLINIC — James Hartje MD, Sioux City  
ALLERGY CLINIC — (NEW) James Oggie MD, Sioux City  
ONCOLOGY CLINIC — J.C. Michalak, MD, Sioux City  
Michael Parra MD, Sioux City (NEW)  
OPHTHALMOLOGY CLINIC — Steve Samuelson, MD, Fremont (NEW)

**SERVICES:**  
Mammography / Radiology, Ultrasound, CT scan (mobile) - Sister Kevin Hermson RRT - Robert Walker, MD Chief Radiologist  
Physical Therapy (full time) - Diane Peterson, RPT  
Cardiac Rehabilitation - Terri Munter, RN - Pam Matthes, RN  
Dietitian - Kristin Heimes, RD  
Life Line - Sister Monica Backes RN  
Speech Therapy Michele Dudley, SLP, Norfolk  
Hospice - Wanda Kucera  
Laboratory — 24 hour service, Elizabeth Mohr, ASCP - John Scott MD, Supervisor  
Home Health Care - Terri Munter, RN - Donna Jacobsen, LPN - Kathy Geler, RN  
Ambulance Service - Louise Jennes, RN  
Social Service Coordinators - Verlyn Anderson, RN & Joan West, LPN  
ECHOCARDIOGRAPHY - VENOUS & CAROTID DOPPLER  
LOCAL PHYSICIANS - Robert Benthack MD - Benjamin Martin MD  
\*Willis Wiseman MD - James Lindau MD - Dave Felber MD  
Physician's Assistant - Gary West, PAC  
OTHER SPECIALISTS - OB/GYN - Keith Vrbicky MD, Norfolk  
GENERAL SURGERY - Gordon Adams MD, Norfolk

ALL I KNOW OF TOMORROW IS THAT PROVIDENCE WILL RISE BEFORE THE SUN



**DENTIST**

**WAYNE DENTAL CLINIC**  
S.P. BECKER, D.D.S.  
611 North Main Street  
Wayne, Nebraska  
Phone: 375-2889

**PHARMACIST**

**WILL DAVIS, R.P.**  
375-4249

**SAV-MOR PHARMACY**  
Phone 375-1444

**OPTOMETRIST**

**WAYNE VISION CENTER**  
DR. DONALD E. KOEBER  
OPTOMETRIST  
313 Main St.  
Phone 375-2020 Wayne, NE

**PHYSICIANS**

**BENTHACK CLINIC**  
Robert B. Benthack, M.D.  
Benjamin J. Martin, M.D.  
Gary J. West, PA-C  
215 West 2nd Street  
Phone: 375-2500  
Wayne, Nebraska


**FAMILY VISION CENTER**  
Quality & Complete Vision Care  
818 Ave. E  
Wisner, Nebraska  
**529-3558**

**NORFOLK MEDICAL GROUP, P.C.**

900 Norfolk Avenue  
402 / 371-3160  
Norfolk, Nebraska

General Surgery: G.D. Adams, M.D., FACS; D.F. Hehner, M.D., FACS. Pediatrics: R.P. Volta, M.D., FAAP, D. Blumenberg, M.D., FAAP; Family Practice: T.J. Biga, M.D.; L.G. Handke, M.D.; W.F. Becker, M.D., FAAP; F.D. Dozon, M.D. Internal Medicine: W.J. Lear, M.D., D. Dudley, M.D.; Psychiatry: V. Canganeli, M.D.

Satellite Clinics - Pierce-Madison-Stanton



**MAGNUSON EYE CARE**  
Dr. Larry M. Magnuson  
Optometrist  
509 Dearborn Street  
Dearborn Mall  
Wayne, Nebraska 68787  
Telephone: 375-5160

**WAYNE FAMILY PRACTICE GROUP P.C.**  
Willis L. Wiseman, M.D. James A. Lindau, M.D.  
Dave Felber, M.D.  
214 Pearl Street Wayne, NE 375-1600  
Hours: Monday-Friday 8-12 & 1:30-4:30, Saturday 8-12